


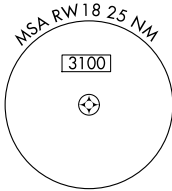
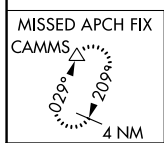
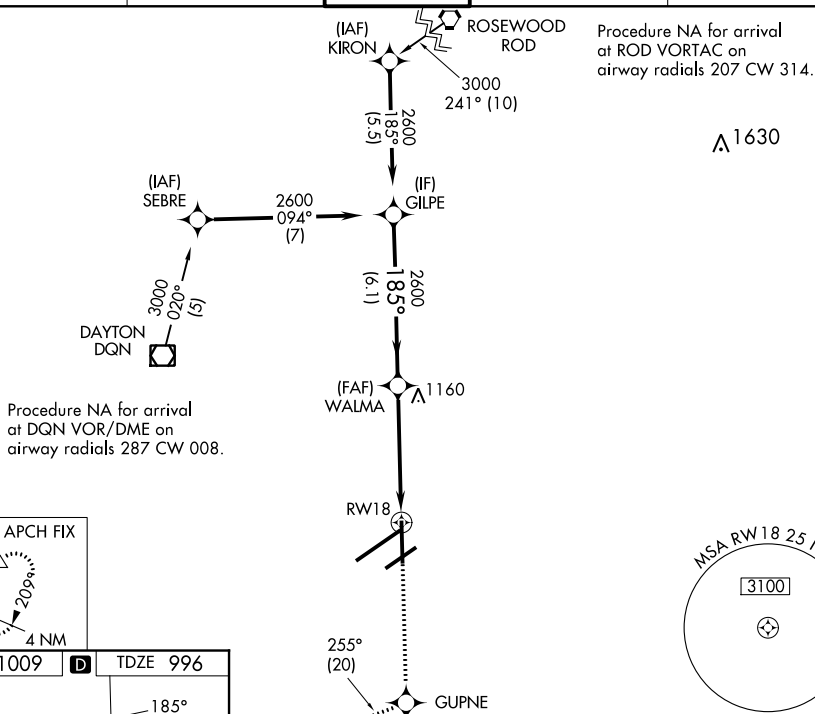
20142

WAAS CH 86914 W18A	APP CRS 185°	Rwy Idg 8502 TDZE 996 Apt Elev 1009
--	------------------------	--

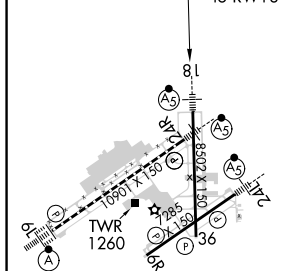
RNAV (GPS) RWY 18

JAMES M COX DAYTON INTL (DAY)

RNP APCH. ▼ For uncompensated Baro-VNAV systems, LNAV/VNAV NA below -20°C or above 54°C. For inop ALS, increase LNAV/VNAV all Cats visibility to RVR 4500. **RVR 1800 authorized with use of FD or AP or HUD to DA.				MALSR 		MISSED APPROACH: Climb to 3000 direct GUPNE and track 255° to CAMMS and hold.	
ATIS 125.8		COLUMBUS APP CON 118.425 323.15		DAYTON TOWER 119.9 257.7		GND CON 121.9	
						CLNC DEL 121.75	



ELEV 1009	D	TDZE 996
		← 185° to RW18



3000 ↑	GUPNE ✱	tr 255° △	CAMMS			
* LNAV only		* 1.2 NM to RW18		WALMA 2600		
RW18		1.2 NM		3.7 NM		GILPE 2600 GP 3.00° TCH 55
185°		2600		6.1 NM		
CATEGORY	A	B	C	D		
LPV DA **	1196/24		200 (200-½)			
LNAV/ VNAV	DA	1274/24		278 (300-½)		
LNAV MDA	1420/24 424 (500-½)		1420/40		424 (500-¾)	
CIRCLING	1580-1 571 (600-1)		1580-1½ 571 (600-1½)		1640-2 631 (700-2)	

HIRL all Rwys
TDZ/CL Rwy 6L
REIL Rwys 6R and 36

DAYTON, OHIO
Amdt 2 05DEC19

39°54'N-84°13'W

JAMES M COX DAYTON INTL (DAY)
RNAV (GPS) RWY 18

EC-2, 31 DEC 2020 to 28 JAN 2021