

WAAS CH 48999 W28A	APP CRS 281°	Rwy Idg TDZE Apt Elev	10113 815 815
--	------------------------	-----------------------------	--

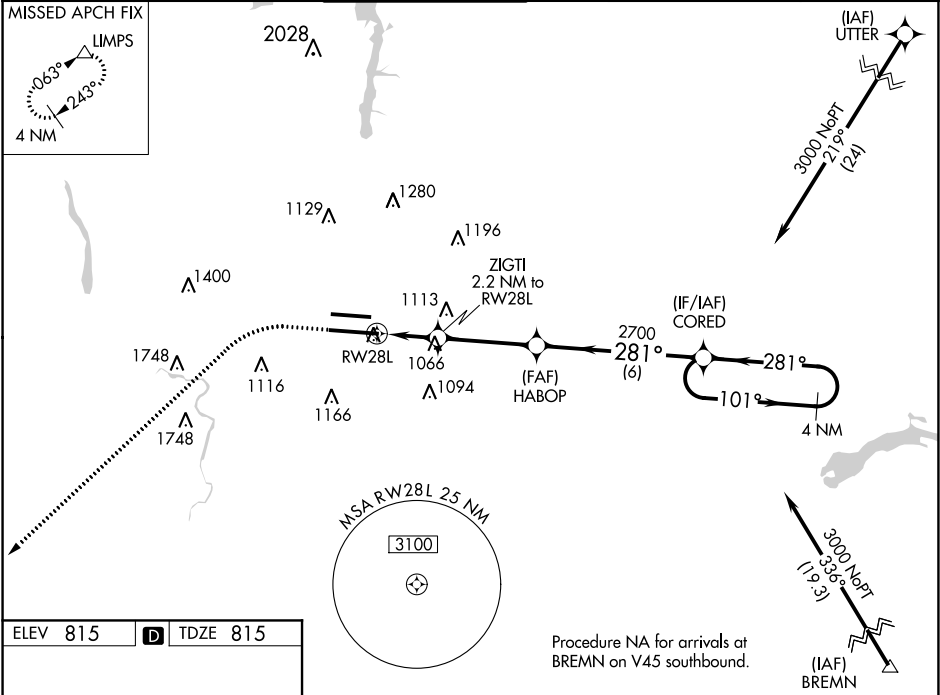
RNAV (GPS) Y RWY 28L
JOHN GLENN COLUMBUS INTL (CMH)

▼ For uncompensated Baro-VNAV systems, LNAV/VNAV NA below -18°C (0°F) or above 54°C (130°F). Simultaneous approach authorized. DME/DME RNP-0.3 NA. LNAV procedure NA during simultaneous operations. Use of FD or AP providing RNAV track guidance required during simultaneous operations.

MALSR

MISSED APPROACH: Climb to 1400 then climbing left turn to 3000 direct LUMPS and hold.

D-ATIS 124.6	COLUMBUS APP CON 125.95 371.975	COLUMBUS TOWER 132.7 257.8	GND CON 121.9 348.6	CLNC DEL 126.3	CPDLC
------------------------	---	--------------------------------------	-------------------------------	--------------------------	-------



ELEV 815 **D** TDZE 815

Diagram Details:

- Runway: RWY 28L, RWY 10R-28L.
- Altitudes: 815, 101, 1026, 1014, 1014 X 150, 1014 X 150.
- Distances: 8000 X 150, 1014 X 150.
- Fixes: TWR 1026, RWY 28L, RWY 10R-28L.
- Procedure: 281° to RWY 28L.

TDZ/CL Rwy 10R-28L
HIRL Rwy 10R-28L and 10L-28R

1400	3000	LUMPS	VGSI and RNAV glidepath not coincident (VGSI Angle 3.00/TCH 68).	4 NM Holding Pattern
*LNAV only.				
CATEGORY A B C D				
LPV DA 1015/18 200 (200-½)				
LNAV/VNAV DA 1261/55 446 (500-1)				
LNAV MDA 1320/24 505 (600-½) 1320/55 505 (600-1)				
C CIRCLING 1340-1 525 (600-1) 1520-2 705 (800-2) 1540-2¾ 725 (800-2¾)				

EC-2, 31 DEC 2020 to 28 JAN 2021

EC-2, 31 DEC 2020 to 28 JAN 2021