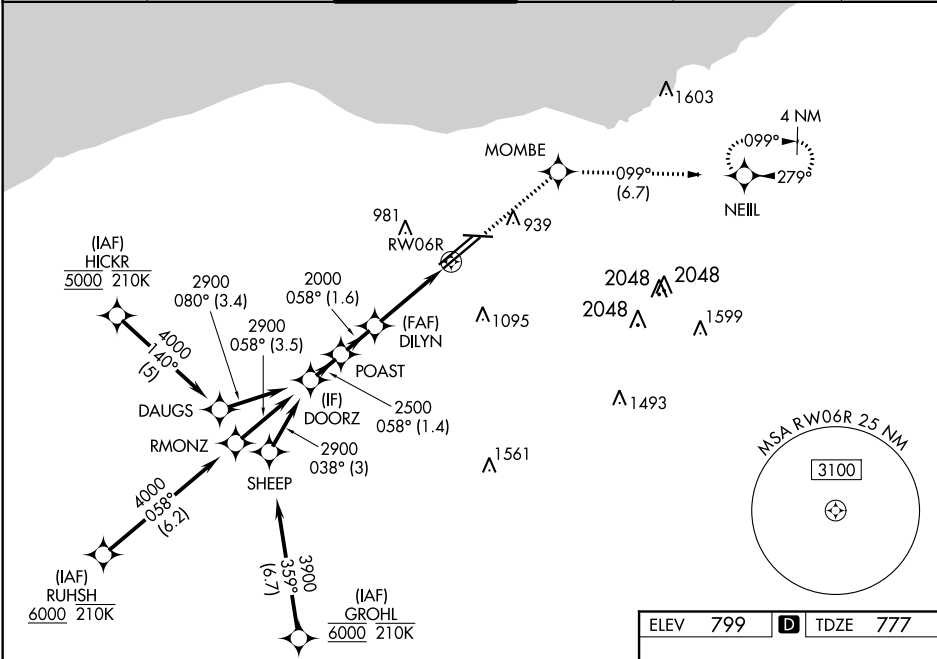


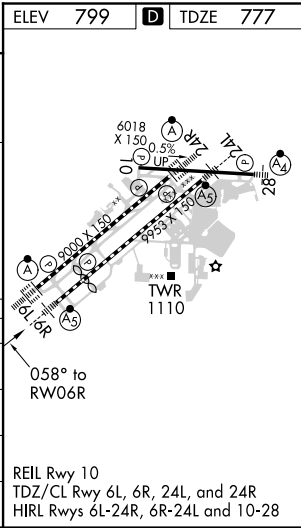
WAAS CH 81806 W06B	APP CRS 058°	Rwy Idg TDZE 777 Apt Elev 799	8029
--	------------------------	---	-------------

RNAV (GPS) Y RWY 6R
CLEVELAND-HOPKINS INTL (CLE)

RNP APCH. <div>▼ For uncompensated Baro-VNAV systems, LNAV/VNAV NA below -18°C (0°F) or above 46°C (114°F). Circling Rwy 10 NA at night. For inop ALS, increase LNAV Cats C/D visibility to 1½ SM.</div>			MALSR 	MISSED APPROACH: Climb to 3000 direct MOMBE and on track 099° to NEILL and hold.	
D-ATIS ARR 127.85 DEP 132.375	CLEVELAND APP CON 124.0 346.325	CLEVELAND TOWER 124.5 273.45	GND CON 121.7 273.45	CLNC DEL 125.05 273.45	CPDLC



VGSI and RNAV glidepath not coincident (VGSI Angle 3.00/TCH 73).				
DOORZ	POAST	DILYN	MOMBE	NEILL
2900	2500	2000	3000	tr 099°
*LNAV only.				
GP 3.10° TCH 58				
1.4 NM 1.6 NM 2.2 NM 1.4 NM				
CATEGORY	A	B	C	D
LPV DA	977/18 200 (200-½)			
LNAV/VNAV DA	1227/45 450 (500-¾)			
LNAV MDA	1260/24	483 (500-½)	1260/50	483 (500-1)
CIRCLING	1420-1	621 (700-1)	1420-1¾ 621 (700-1¾)	1420-2 621 (700-2)



EC-2, 31 DEC 2020 to 28 JAN 2021

EC-2, 31 DEC 2020 to 28 JAN 2021