



CLEVELAND, OHIO

AL-84 (FAA)

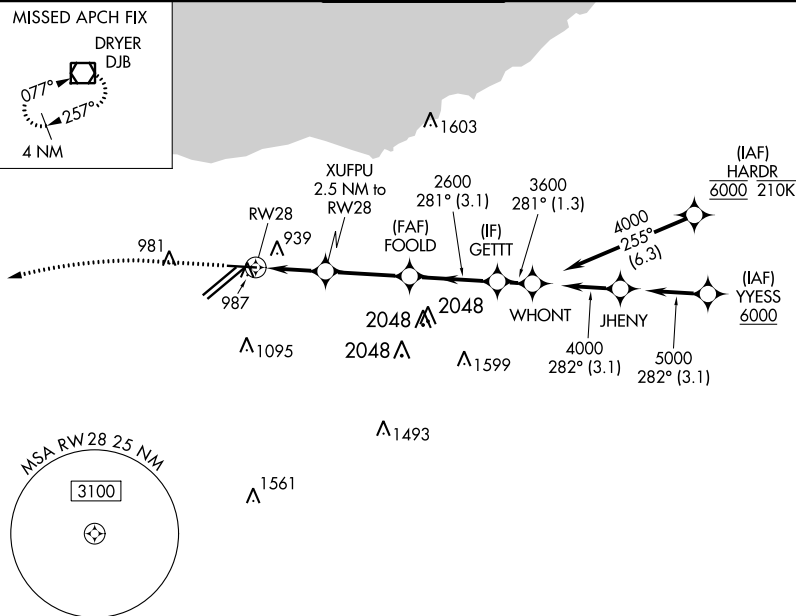
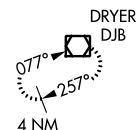
20366

WAAS CH 40109 W28A	APP CRS 281°	Rwy Idg 6018 TDZE 799 Apt Elev 799
--	------------------------	---

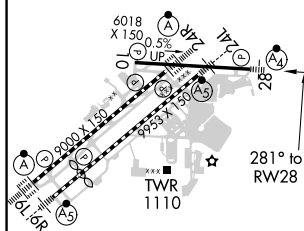
RNAV (GPS) RWY 28
CLEVELAND-HOPKINS INTL (CLE)

RNP APCH.			MALSF 		MISSED APPROACH: Climb to 1400 then climbing left turn to 3000 direct DJB VOR/DME and hold.	
 For uncompensated Baro-VNAV systems, LNAV/VNAV NA below -18°C (0°F) or above 54°C (130°F). Circling Rwy 10 NA at night. Inop table does not apply to LPV.						
D-ATIS ARR 127.85 DEP 132.375		CLEVELAND APP CON 124.0 346.325	CLEVELAND TOWER 124.5 273.45	GND CON 121.7 273.45	CLNC DEL 125.05 273.45	CPDLC


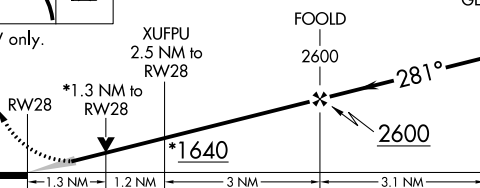
MISSED APCH FIX



ELEV 799	D	TDZE 799
----------	----------	----------



REIL Rwy 10
TDZ/CL Rwy 6L, 6R, 24L, and 24R
HIRL Rwy 6L-24R, 6R-24L and 10-28

1400 ↑	3000 ↖	DJB 				
*LNAV only.			XUFPU 2.5 NM to RW28	FOOLD 2600	GETTT 3600	GP 3.00° TCH 46
RW28			*1.3 NM to RW28	*1640	281°	2600
1.3 NM			1.2 NM	3 NM	3.1 NM	
CATEGORY	A	B	C	D		
LPV DA	999/40 200 (200-¾)					
LNAV/ VNAV DA	1168/40 369 (400-¾)					
LNAV MDA	1260/40 461 (500-¾)	1260/60 461 (500-1½)				
C CIRCLING	1420-1 621 (700-1)	1420-1¾ 621 (700-1¾)		1420-2 621 (700-2)		

CLEVELAND, OHIO
Amdt 3 24MAY18

41°25'N-81°51'W

CLEVELAND-HOPKINS INTL (CLE)
RNAV (GPS) RWY 28

EC-2, 31 DEC 2020 to 28 JAN 2021

EC-2, 31 DEC 2020 to 28 JAN 2021