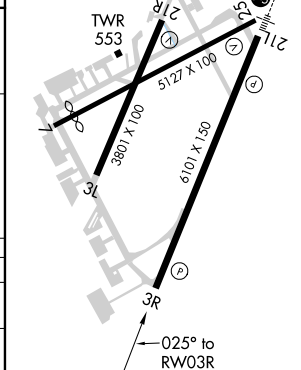
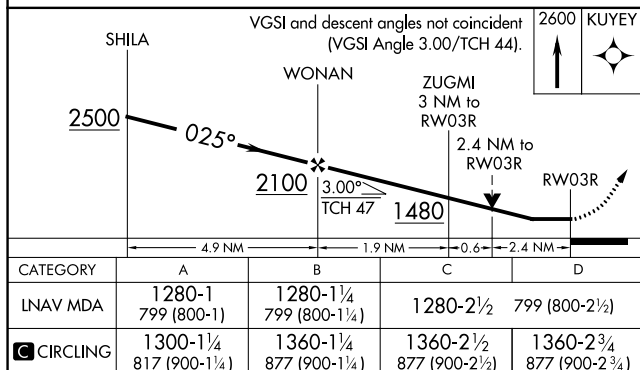
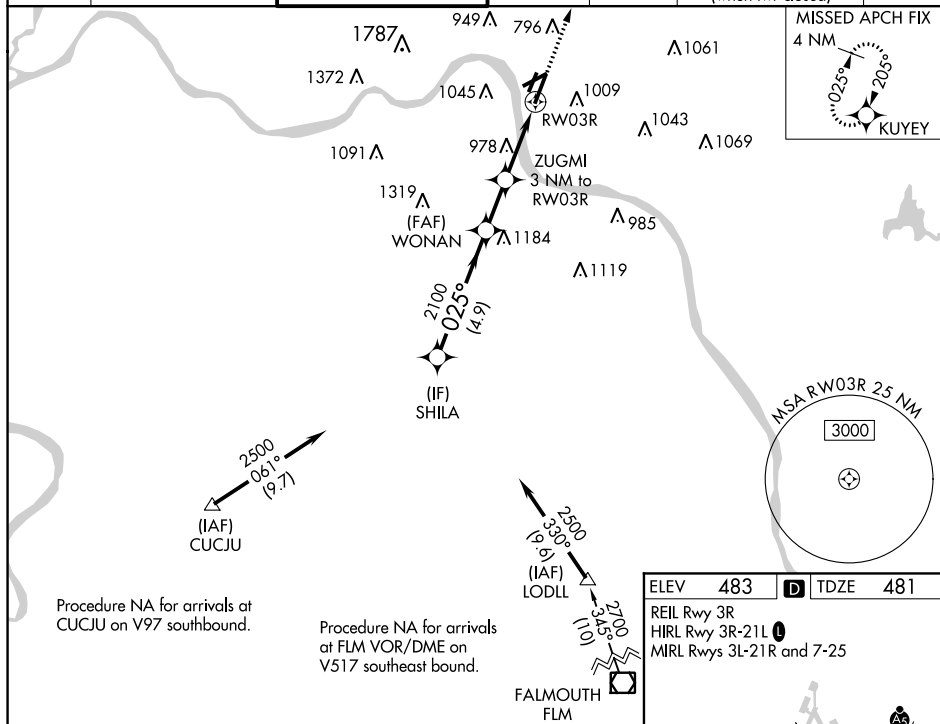


Rwy Idg	6101
TDZE	481
Apt Elev	483

CINCINNATI MUNI AIRPORT LUNKEN FIELD (LUK)

V Circling NA for Cat D north of Rwy 7 and northwest of Rwy 21R. Circling Rwy 3L, **A** 7, 21R NA at night. Rwy 3R helicopter visibility reduction below $\frac{1}{2}$ SM NA. When local altimeter setting not received, use Cincinnati/Northern Kentucky Intl altimeter setting and increase all MDA 100 feet and LNAV Cat A visibility $\frac{1}{2}$ SM; increase Circling Cat B/D visibility $\frac{1}{2}$ SM and Circling Cat C visibility $\frac{1}{2}$ SM. VDP NA when using Cincinnati/Northern Kentucky Intl altimeter setting.

MISSED APPROACH:
Climb to 2600 direct
KUYEY and hold.

UNICOM
122.95

RNAV (GPS) RWY 3R