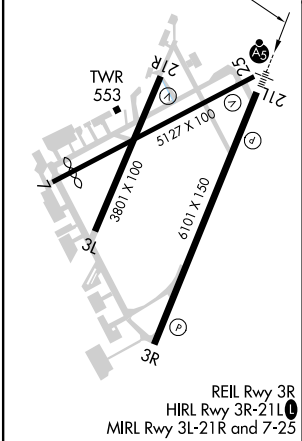
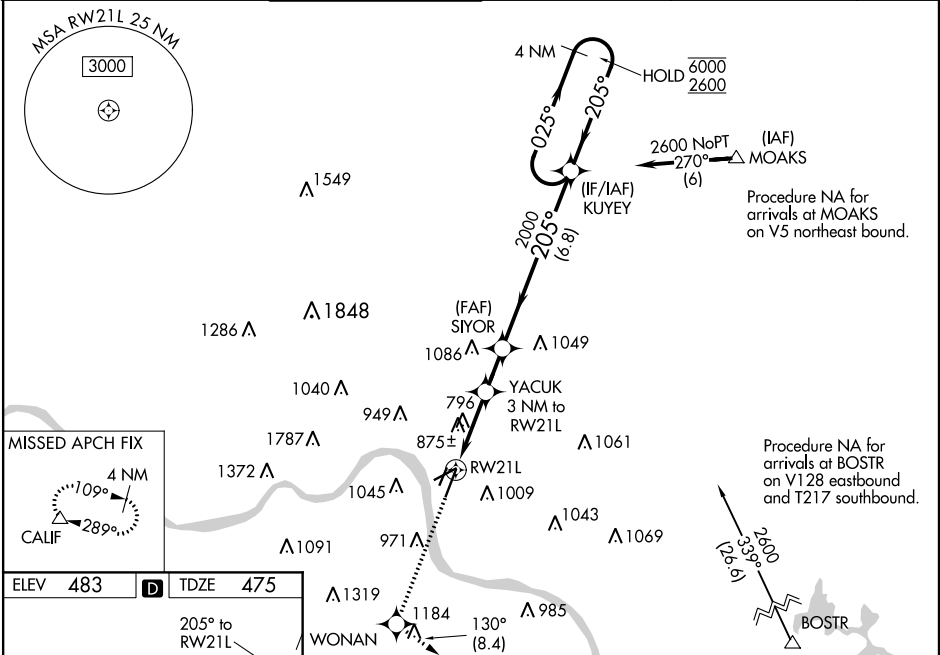


WAAS CH 42511 W21A	APP CRS 205°	Rwy Idg TDZE 475 Apt Elev 483
--	------------------------	---

RNAV (GPS) RWY 21L
CINCINNATI MUNI AIRPORT LUNKEN FIELD (LUK)

RNP APCH. ▼ Circling NA for Cat D north of Rwy 7 and northwest of Rwy 21R. Circling Rwy 3L, 7, 21R NA at night. Rwy 21L helicopter visibility reduction below ¾ SM NA. Inop table does not apply to LNAV/VNAV. For uncompensated Baro-VNAV systems, LNAV/VNAV NA below -15°C or above 54°C. For inop ALS, increase LPV all Cats visibility to RVR 4500, LNAV Cats A/B visibility to RVR 5500 and LNAV Cats C/D visibility to 2 SM. ▲ MISSED APPROCH FIX				MALSRL 	MISSED APPROACH: Climb to 2500 direct WONAN and on track 130° to CALIF and hold, continue climb-in-hold to 2600.	
ATIS 120.25	CINCINNATI APP CON 121.0 254.25	LUNKEN TOWER ★ 118.7 (CTAF) 0 257.8	GND CON 121.9	CLNC DEL 121.9	CLNC DEL 124.9 (when twr closed)	UNICOM 122.95



ELEV 483 TDZE 475		205° to RWY21L		4 NM Holding Pattern	
2500 WONAN		tr 130°	CALIF	KUYEY	
*LNAV only.		YACUK 3 NM to RWY21L		SIYOR 2000	
RWY21L		*2.1 NM to RWY21L		205° 025° 6000 2600	
2.1 NM		0.9 NM	1.7 NM	6.8 NM	
CATEGORY	A	B	C	D	
LPV	DA	756/40	281 (300-¾)		
LNAV/VNAV	DA	1217-2¼	742 (800-2¼)		
LNAV MDA	1200/40	725 (800-¾)	1200-1½ 725 (800-1½)		
CIRCLING	1300-1¼ 817 (900-1¼)	1360-1¼ 877 (900-1¼)	1360-2½ 877 (900-2½)	1360-2¾ 877 (900-2¾)	