

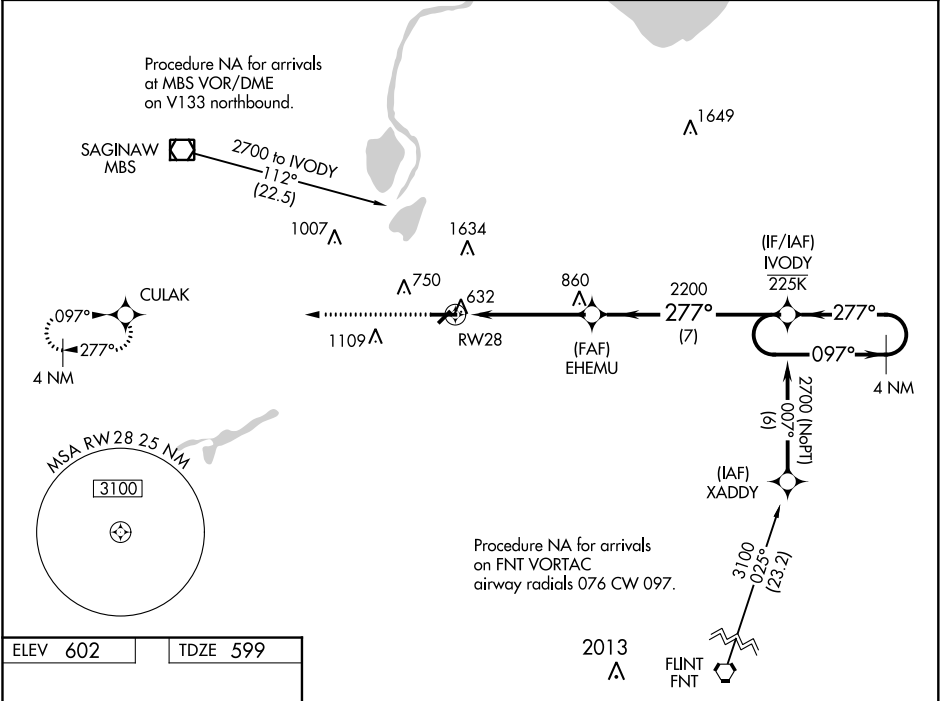
WAAS CH 90200 W28A	APP CRS 277°	Rwy Idg TDZE Apt Elev	5002 599 602
--	------------------------	-----------------------------	---

RNAV (GPS) RWY 28

SAGINAW COUNTY H W BROWNE (HYX)

<p>⚠ Inop table does not apply to LPV DA. For uncompensated Baro-VNAV systems, LNAV/VNAV NA below -18°C (0°F) or above 54°C (130°F). Circling NA for Cat C north of Rwy 10-28. Circling Rwy 5, 23 NA at night. DME/DME RNP-0.3 NA. For inop ALS, increase LNAV/VNAV all Cats visibility to ½ SM.</p>	<p>MALSF</p> <p> </p>	<p>MISSED APPROACH: Climb to 2800 direct CULAK and hold.</p>
---	------------------------------	---

<p>AWOS-3 118.325</p>	<p>GREAT LAKES APP CON* 120.95 235.625</p>	<p>UNICOM 122.8 (CTAF) 0</p>
----------------------------------	---	---



ELEV 602	TDZE 599
----------	----------

VGSI and RNAV glidepath not coincident
(VGSI Angle 3.00/TCH 44).

4 NM
Holding Pattern

CATEGORY	A	B	C	D
LPV DA	804- $\frac{3}{4}$ 205 (300- $\frac{3}{4}$)			NA
LNAV/VNAV DA	849- $\frac{3}{4}$ 250 (300- $\frac{3}{4}$)			NA
LNAV MDA	1080- $\frac{3}{4}$ 481 (500- $\frac{3}{4}$)		1080-1 $\frac{1}{8}$ 481 (500-1 $\frac{1}{8}$)	NA
CIRCLING	1100-1 498 (500-1)		1460-2 $\frac{1}{2}$ 858 (900-2 $\frac{1}{2}$)	NA

REIL Rwy 10
MIRL Rwy 5-23 and 10-28

REIL Rwy 10 **0**
MIRL Rwy 5-23 and 10-28 **0**

RNAV (GPS) RWY 28

EC-1, 31 DEC 2020 to 28 JAN 2021

EC-1, 31 DEC 2020 to 28 JAN 2021