

WAAS  
CH **50200**  
**W10A**

APP CRS  
**097°**

Rwy Idg  
TDZE **600**  
Apt Elev **602**

RNAV (GPS) RWY 10

SAGINAW COUNTY H W BROWNE (HYX)

RNP APCH.

T

A

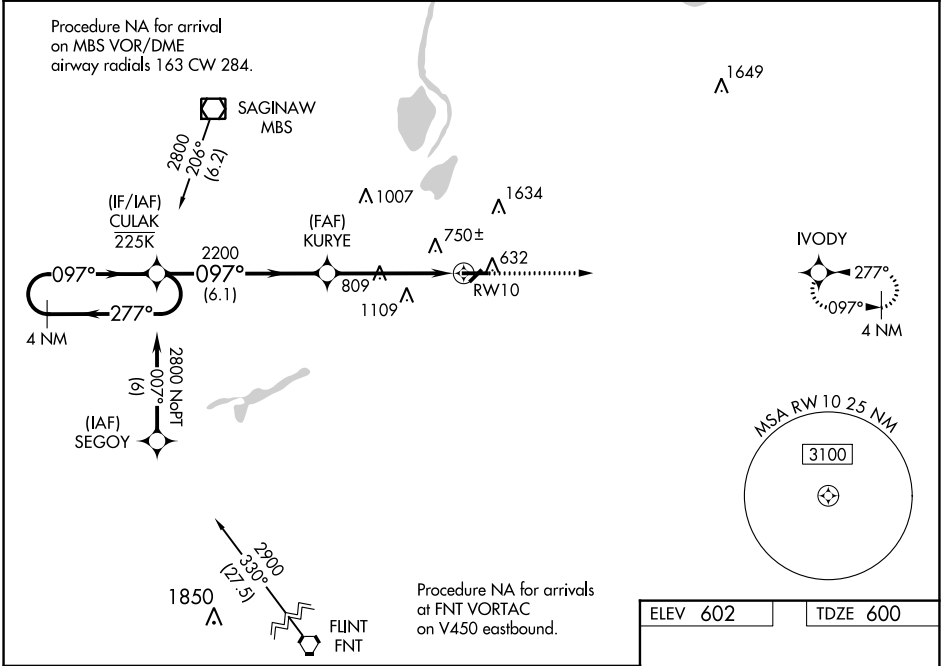
For uncompensated Baro-VNAV systems, LNAV/VNAV NA below -18°C or above 54°C. Circling NA for Cat C north of Rwy 10-28.  
Circling Rwy 5, 23 NA at night.

MISSED APPROACH: Climb to 2700 direct IVODY and hold.

AWOS-3  
**118.325**

GREAT LAKES APP CON ★  
**120.95 235.625**

UNICOM  
**122.8** (CTAF) **0**



4 NM Holding Pattern

GP 3.00° TCH 45

CULAK

KURYE

RW10

2700 IVODY

\*LNAV only

097° to RW10

5002 X 100

2852 X 60

28

CATEGORY	A	B	C	D
LPV DA	800-3/4	200 (200-3/4)		NA
LNAV/VNAV DA	1018-13/8	418 (500-13/8)		NA
LNAV MDA	1060-1	460 (500-1)	1060-13/8 460 (500-13/8)	NA
CIRCLING	1100-1	498 (500-1)	1460-21/2 858 (900-21/2)	NA

REIL Rwy 10 **0**  
MIRL Rwy 5-23 and 10-28 **0**