

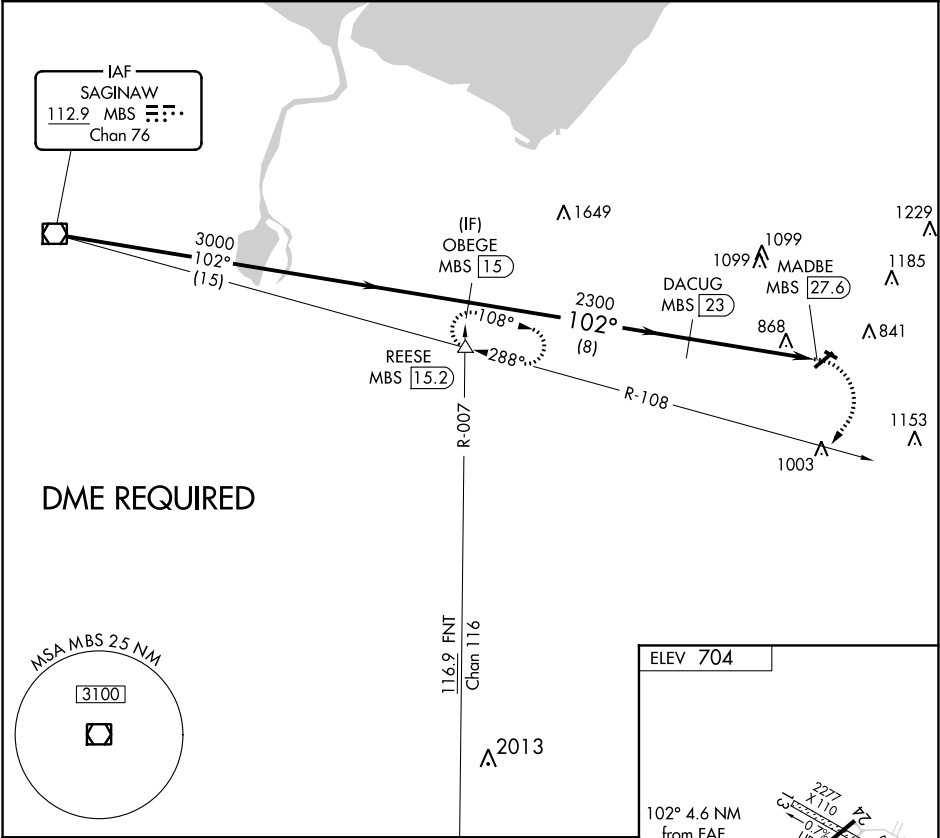
VOR/DME	MBS	APP CRS	Rwy Idg	N/A
112.9		102°	TDZE	N/A
Chan 76			Apt Elev	704

VOR-A

TUSCOLA AREA (CFS)

<div><div></div><div>Circling NA to Rwy 13 and 31. DME required. Procedure NA at night.</div></div>	<div>MISSED APPROACH: Climbing right turn to 3000 on heading 220° and on MBS VOR/DME R-108 to REESE INT/15.2 DME and hold.</div>
---	--

AWOS-3 119.275	GREAT LAKES APP CON ★ 120.95 235.625	UNICOM 123.0 (CTAF) 0
-------------------	---	--------------------------



	MBS VOR/DME	OBEGE MBS 15	3000 hdg 220°	REESE MBS R-108
	3000	3000	2300	MADBE MBS 27.6
	15 NM	8 NM	4.6 NM	
CATEGORY	A	B	C	D
CIRCLING	1240-1	536 (600-1)	1240-1½ 536 (600-1½)	NA