

VORTAC PLN
111.8
Chan **55**

APP CRS
082°

Rwy Idg
TDZE **640**
Apt Elev **640**

VOR RWY 10

CHEBOYGAN COUNTY (SLH)

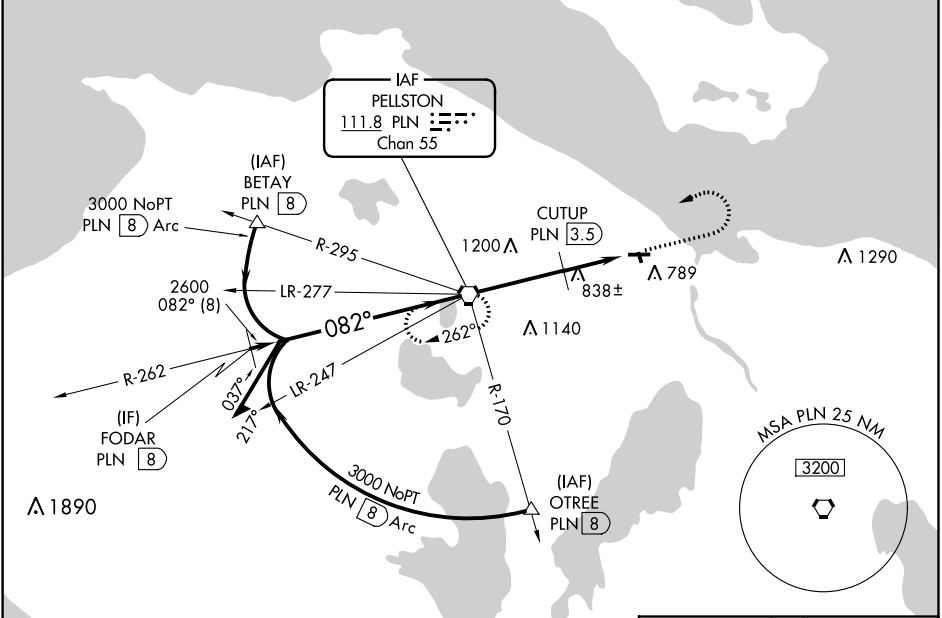
▼

Helicopter visibility reduction below 1 SM NA. Night landing Rwy 10, 17, 35 NA. When local altimeter setting not received, use Pellston altimeter setting; increase all MDA 60 feet; increase S-10 Cat B visibility ¼ SM, S-10 Cat C visibility ½ SM, Circling Cat B visibility ¼ SM and Circling Cat C visibility ½ SM; increase CUTUP fix minimums S-10 Cat C visibility ½ SM.

⚠

MISSED APPROACH: Climb to 2800 then left turn direct PLN VORTAC and hold.

AWOS-3 118.175	MINNEAPOLIS CENTER 134.6 354.05	UNICOM 122.8 (CTAF)	122.5 0
--------------------------	---	-------------------------------	----------------



Remain within 10 NM

3000

262°

082°

2600

3.05°

TCH 40

3.5 NM

2.4 NM

PLN VORTAC

2800

PLN

*1420 when using Pellston altimeter setting

CUTUP PLN 3.5

PLN 5.9

*1360

VGSI and descent angles not coincident (VGSI Angle 4.00/TCH 25).

ELEV 640

TDZE 640

082° 5.9 NM from FAF

4005 X 75

187 X 60

0.3% UP

28

35

REIL Rwys 10 and 28

MRL Rwy 10-28 and 17-35

FAF to MAP 5.9 NM

Knots	60	90	120	150	180
Min:Sec	5:54	3:56	2:57	2:22	1:58

CATEGORY	A	B	C	D
S-10	1360-1	720 (800-1)	1360-2 720 (800-2)	NA
CIRCLING	1360-1	720 (800-1)	1360-2 720 (800-2)	NA
CUTUP FIX MINIMUMS				
S-10	1100-1	460 (500-1)	1100-1½ 460 (500-1½)	NA
CIRCLING	1140-1	500 (500-1)	1140-1½ 500 (500-1½)	NA