

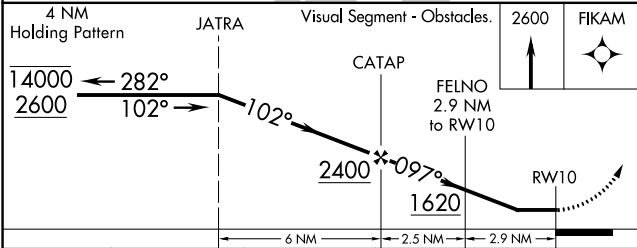
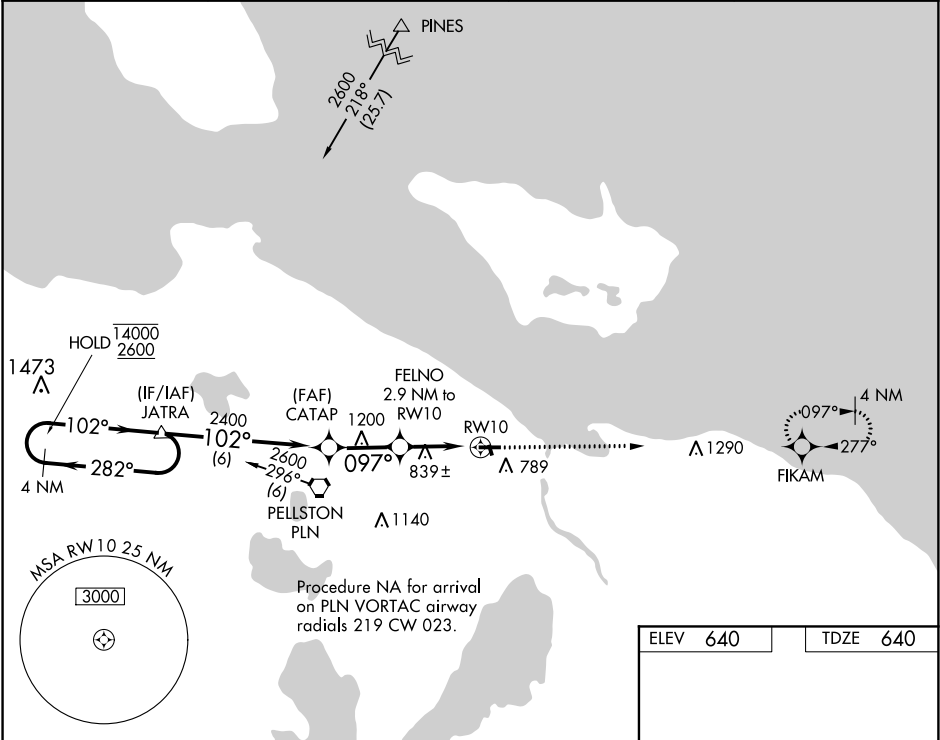
WAAS CH 50224 W10A	APP CRS 097°	Rwy Idg TDZE Apt Elev	4005 640 640
--	------------------------	-----------------------------	---

RNAV (GPS) RWY 10

CHEBOYGAN COUNTY (SLH)

RNP APCH.	Helicopter visibility reduction below 1 SM NA. Straight-in Rwy 10 NA at night, Circling Rwy 10, 17, 35 NA at night. When local altimeter setting not received, use Pellston altimeter setting; increase all MDA 60 feet, increase LP and LNAV Cat C visibility ½ SM.	MISSED APPROACH: Climb to 2600 direct FIKAM and hold.
-----------	--	---

AWOS-3 118.175	MINNEAPOLIS CENTER 134.6 354.05	UNICOM 122.8 (CTAF)	122.5 0
--------------------------	---	-------------------------------	----------------



CATEGORY	A	B	C	D
LP MDA	1060-1	420 (500-1)	1060-1¼ 420 (500-1¼)	NA
LNAV MDA	1100-1	460 (500-1)	1100-1¾ 460 (500-1¾)	NA
CIRCLING	1140-1	500 (500-1)	1140-1½ 500 (500-1½)	NA

