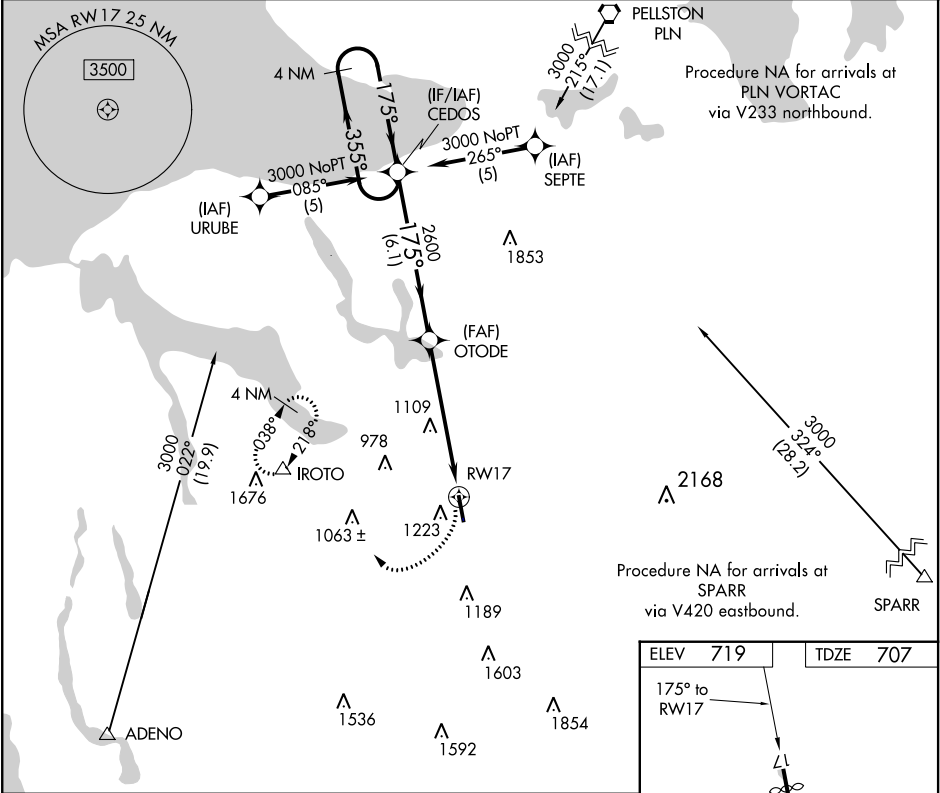


APP CRS	Rwy Idg	4887
175°	TDZE	707
	Apt Elev	719

RNAV (GPS) RWY 17
BOYNE MOUNTAIN (BFA)

RNP APCH: NA	Circling NA west of Rwy 17-35. Use Bellaire altimeter setting; when not received, use Pellston altimeter setting and increase all MDAs 20 feet and increase LNAV Cats A, C, and D visibility ¼ mile, and Circling Cats A and C ¼ mile. Rwy 17 helicopter visibility reduction below 1 SM NA. Procedure NA at night.	MISSED APPROACH: Climbing right turn to 3000 direct IROTO and hold.
-----------------	---	--

MINNEAPOLIS CENTER 134.6 354.05	UNICOM 122.8 (CTAF)	122.85 0
------------------------------------	------------------------	----------



CATEGORY	A	B	C	D
LNAV MDA	1580 - 1 873 (900-1)	1580 - 1¼ 873 (900-1¼)	1580 - 2½ 873 (900-2½)	1580 - 2¾ 873 (900-2¾)
CIRCLING	1580 - 1 861 (900-1)	1580 - 1¼ 861 (900-1¼)	1580 - 2½ 861 (900-2½)	1640 - 3 921 (1000-3)

ELEV 719	TDZE 707
175° to RW17	
5.187 x 60	
35	
REIL Rwy 17 and 35 0	
URL Rwy 17-35 0	

EC-1, 31 DEC 2020 to 28 JAN 2021

EC-1, 31 DEC 2020 to 28 JAN 2021