

WAAS CH <b>69205</b> <b>W17A</b>	APP CRS <b>170°</b>	Rwy Idg <b>5009</b> TDZE <b>763</b> Apt Elev <b>763</b>
--	------------------------	---

# RNAV (GPS) RWY 17

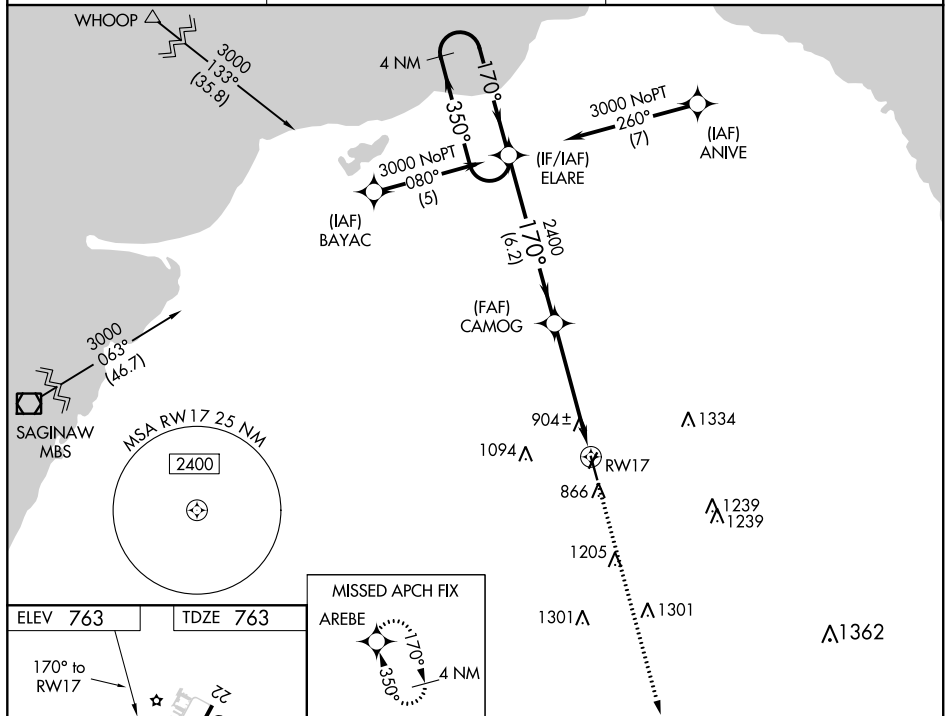
## HURON COUNTY MEMORIAL (BAX)

RNP APCH.

**▼** Baro-VNAV NA when using MBS Intl altimeter setting. For uncompensated Baro-VNAV systems, LNAV/VNAV NA below -16°C or above 54°C. When local altimeter setting not received, use MBS Intl altimeter setting and increase all DA 129 feet and all MDA 140 feet, increase LPV all Cats visibility ¾ mile; increase LNAV Cat C ½ mile. Rwy 17 helicopter visibility reduction below ¾ SM NA.

**MISSED APPROACH:**  
Climb to 3000 direct  
AREBE and hold.

AWOS-3 <b>118.6</b>	CLEVELAND CENTER <b>126.75 348.75</b>	UNICOM <b>123.075 (CTAF) 0</b>
------------------------	--	-----------------------------------



4 NM Holding Pattern

ELARE

3000

350°

170°

GP 3.00°

TCH 40

2400

CAMOG

2400

6.2 NM

4.9 NM

RW17

CATEGORY	A	B	C	D
LPV DA	1075-1	312 (400-1)		NA
LNAV/VNAV DA	1352-2	589 (600-2)		NA
LNAV MDA	1220-1	457 (500-1)	1220-1¼ 457 (500-1¼)	NA

REIL Rwy 17 and 35

MIRL Rwy 4-22 and 17-35