

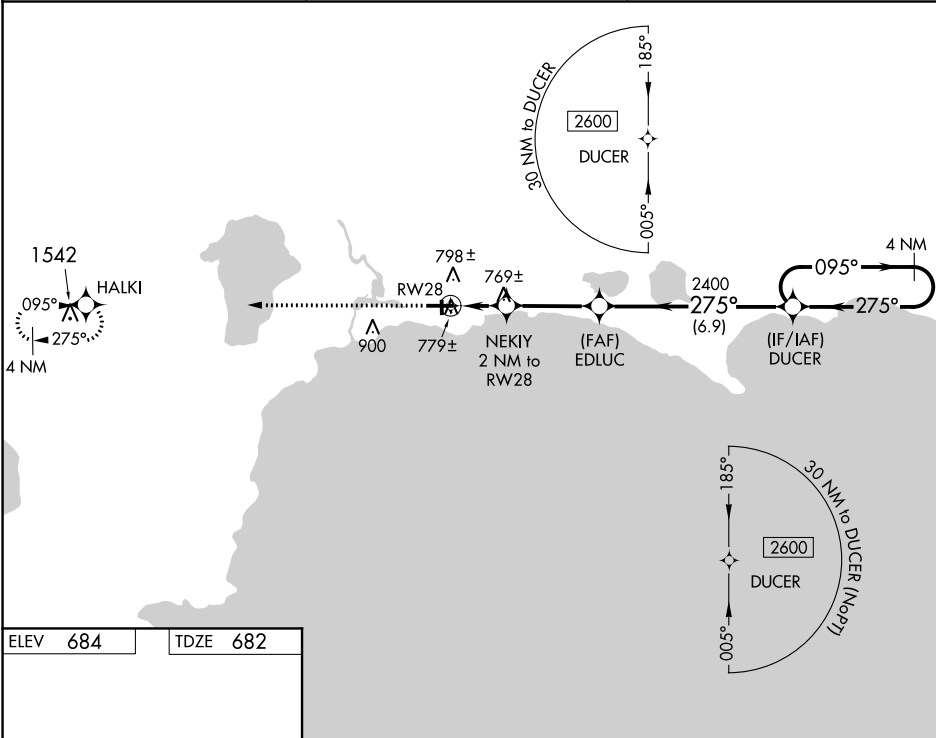
WAAS CH 53527 W28A	APP CRS 275°	Rwy Idg TDZE 682 Apt Elev 684
--	------------------------	---

RNAV (GPS) RWY 28
SCHOOLCRAFT COUNTY (ISQ)

⚠ When local altimeter setting not received, use Beaver Island altimeter setting and increase all MDA 80 feet, increase LP Cat C and D visibility ¼ mile and LNAV Cat C and D visibility ⅜ mile. When VGSi inop, Straight-In/Circling Rwy 28 procedure NA at night. DME/DME RNP-0.3 NA. Visibility reduction by helicopters NA. Circling to Rwy 1/19 NA at night.

MISSED APPROACH:
Climb to 2600 direct
HALKI and hold.

AWOS-3 118.775	MINNEAPOLIS APP CON 134.6 354.05	UNICOM 122.8 (CTAF) 0
--------------------------	--	---------------------------------



ELEV **684** TDZE **682**

REIL Rwy 28 0
MIRL Rwy 10-28 0

275° to RW28

61 X 50

2501 X 100

28

1

2600

↑

HALKI

✦

4 NM Holding Pattern

NEKIY

2 NM to RW28

EDLUC

3.00° TCH 38

DUCER

275°

275°

095°

2600

2400

1340

2 NM

3.3 NM

6.9 NM

CATEGORY	A	B	C	D
LP MDA	1020-1		338 (400-1)	
LNAV MDA	1040-1		358 (400-1)	
CIRCLING	1120-1 436 (500-1)	1140-1 456 (500-1)	1140-1½ 456 (500-1½)	1260-2 576 (600-2)

EC-1, 31 DEC 2020 to 28 JAN 2021

EC-1, 31 DEC 2020 to 28 JAN 2021