

WAAS
CH **70534**
W27A

APP CRS
274°

Rwy Idg
TDZE **1146**
Apt Elev **1150**

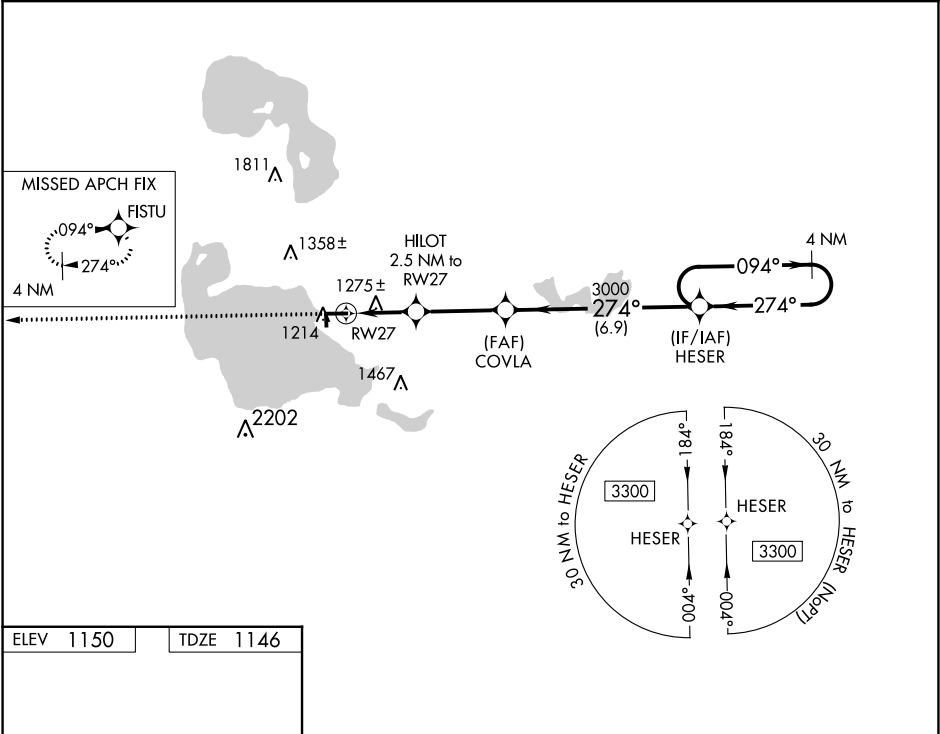
RNAV (GPS) RWY 27

ROSCOMMON COUNTY-BLODGETT MEMORIAL (HTL)

When local altimeter setting not received, use Gaylord altimeter setting and increase all MDA 120 feet, and increase LP and LNAV Cat C/D visibility ½ mile. DME/DME RNP-0.3 NA. Procedure NA at night. Helicopter visibility reduction below 1 SM NA. Circling NA to Rwy's 18, 36.

MISSED APPROACH:
Climb to 3300 direct FISTU and hold.

ASOS 118.05	MINNEAPOLIS CENTER 125.475 269.45	UNICOM 122.8 (CTAF) 0
-----------------------	---	---------------------------------



ELEV 1150

TDZE 1146

3300

FISTU

Visual Segment - Obstacles

4000 X 75

27

274° to RW27

81

2200

2200

36

HILOT

2.5 NM to RW27

1980

2.5 NM

3.2 NM

6.9 NM

COVLA

3000

HESER

4 NM Holding Pattern

094°

274°

3300

CATEGORY	A	B	C	D
LP MDA	1540-1	394 (400-1)	1540-1¼	394 (400-1¼)
LNAV MDA	1560-1	414 (500-1)	1560-1¼	414 (500-1¼)
CIRCLING	1600-1	450 (500-1)	1600-1½ 450 (500-1½)	1700-2 550 (600-2)

HIRL Rwy 9-27 0

REIL Rwy's 9 and 27 0