

WAAS CH 99722 W31A	APP CRS 312°	Rwy Idg TDZE 943 Apt Elev 962	5002 943 962
--	------------------------	---	---

RNAV (GPS) RWY 31

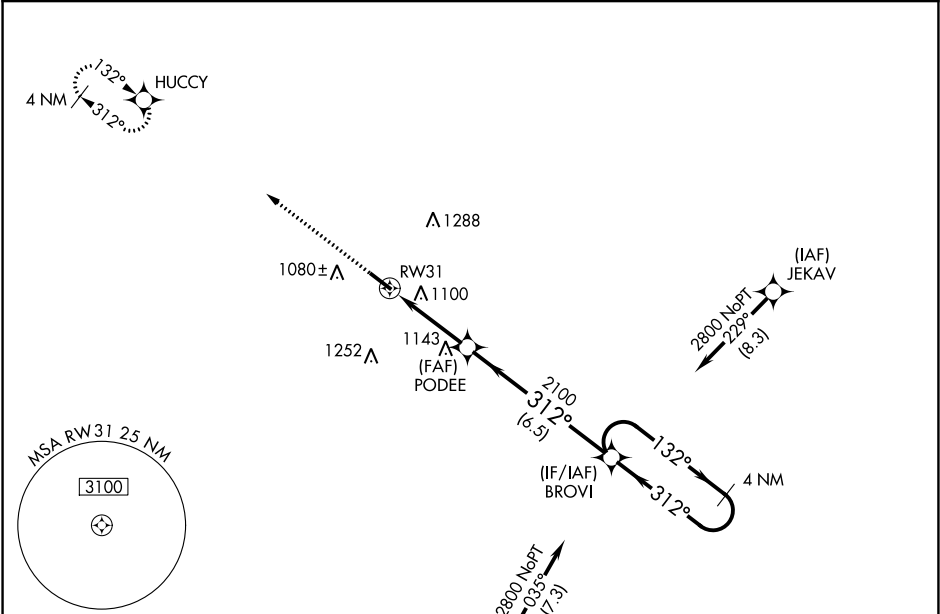
LIVINGSTON COUNTY SPENCER J HARDY (OZW)

RNP APCH.

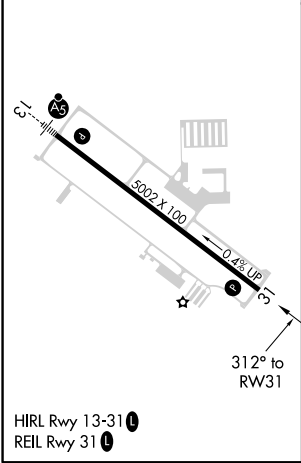
▽ For uncompensated Baro-VNAV systems, LNAV/VNAV NA below -16°C or above 54°C.

MISSED APPROACH:
Climb to 3000 direct
HUCCY and hold.

AWOS-3 118.875	DETROIT APP CON 132.35 284.0	CLNC DEL 121.725 (GCO)	UNICOM 123.0 (CTAF) 0
--------------------------	--	----------------------------------	--



ELEV 962	TDZE 943
----------	----------



3000	HUCCY	VGSI and RNAV glidepath not coincident (VGSI Angle 3.00/TCH 30).				4 NM Holding Pattern
* LNAV only.		BROVI				132° → 6000 ← 312° 2800
* 1.3 NM to RW31		PODEE				GP 3.00° TCH 40
RW31		2100				
1.3		2.2 NM				6.5 NM
CATEGORY	A	B	C	D		
LPV DA	1143-3/4		200 (200-3/4)			
LNAV/VNAV DA	1410-1 5/8		467 (500-1 5/8)			
LNAV MDA	1400-1		457 (500-1)		1400-1 3/8 457 (500-1 3/8)	
CIRCLING	1400-1 438 (500-1)		1420-1 458 (500-1)		1420-1 1/2 458 (500-1 1/2) 1520-2 558 (600-2)	

EC-1, 31 DEC 2020 to 28 JAN 2021

EC-1, 31 DEC 2020 to 28 JAN 2021