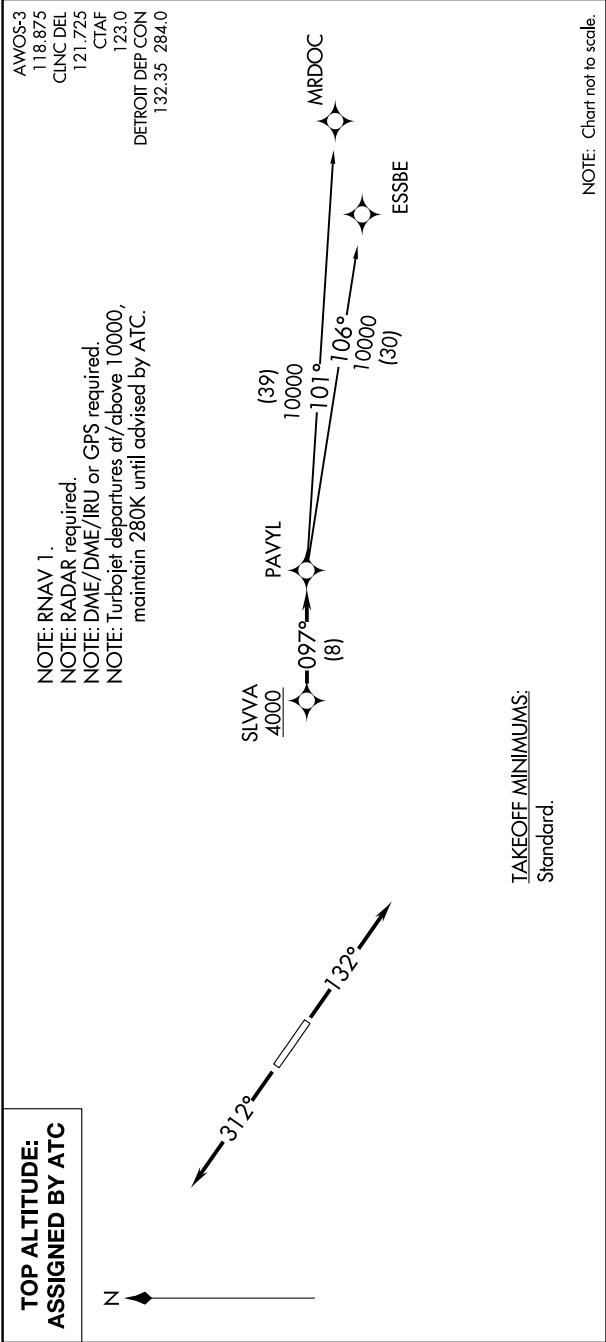


PAVYL TWO DEPARTURE (RNAV)

LIVINGSTON COUNTY SPENCER J HARDY (OZW)
AL-5485 (FAA)
HOWELL, MICHIGAN

EC-1, 31 DEC 2020 to 28 JAN 2021



DEPARTURE ROUTE DESCRIPTION

TAKEOFF RUNWAY 13: Climb on heading 132° or as assigned for RADAR vectors to cross SLVVA at or above 4000, thence....
TAKEOFF RUNWAY 31: Climb on heading 312° or as assigned for RADAR vectors to cross SLVVA at or above 4000, thence....
.....on track 097° to PAVYL, then on (transition). Maintain ATC assigned altitude, expect filed altitude 10 minutes after departure.

ESSBE TRANSITION (PAVYL2.ESSBE):
MRDOC TRANSITION (PAVYL2.MRDOC):

EC-1, 31 DEC 2020 to 28 JAN 2021

PAVYL TWO DEPARTURE (RNAV)

HOWELL, MICHIGAN
LIVINGSTON COUNTY SPENCER J HARDY (OZW)

(PAVYL2.PAVYL) 15AUG19