

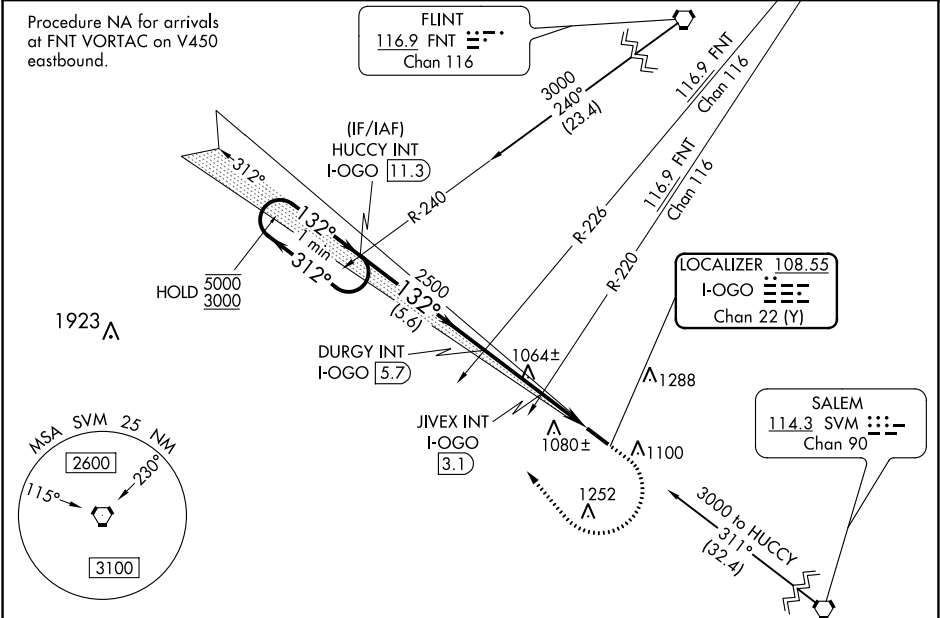
LOC/DME I-OGO <b>108.55</b> Chan <b>22 (Y)</b>	APP CRS <b>132°</b>	Rwy Idg TDZE <b>962</b> Apt Elev <b>962</b>
--	------------------------	---

ILS or LOC RWY 13

LIVINGSTON COUNTY SPENCER J HARDY (OZW)

<p>▼ For inop ALS, increase LOC Cat C and D visibility to 1½ SM, and JIVEX fix minimums S-13 Cat C and D visibility to 1 SM.</p> <p>▲ NA</p>	<p>MALSR</p> <p>AS</p>	<p>MISSED APPROACH: Climb to 1600 then climbing right turn to 3000 heading 356° and I-OGO NW course to HUCCY INT/ I-OGO 11.3 DME and hold.</p>
--	------------------------	--

AWOS-3 <b>118.875</b>	DETROIT APP CON <b>132.35 284.0</b>	CLNC DEL <b>121.725 (GCO)</b>	UNICOM <b>123.0 (CTAF) 0</b>
--------------------------	--	----------------------------------	---------------------------------



One Minute Holding Pattern		HUCCY INT I-OGO 11.3		DURGY INT I-OGO 5.7		JIVEX INT I-OGO 3.1		HUCCY INT		ELEV 962		TDZE 962	
5000 3000		←312° 132°→		132°		2500		1600 3000 hdg 356° I-OGO NW crs		*LOC only			
GS 3.00° TCH 48				2500		*1540		*I-OGO 2 I-OGO 1					
		5.6 NM		2.6 NM		1.1		1.0					
CATEGORY		A		B		C		D					
S-ILS 13		1162-½		200 (200-½)									
S-LOC 13		1540-½		578 (600-½)		1540-1¼		578 (600-1¼)					
CIRCLING		1540-1		578 (600-1)		1540-1½ 578 (600-1½)		1540-2 578 (600-2)					
JIVEX FIX MINIMUMS (DUAL VOR RECEIVERS OR DME REQUIRED)													
S-LOC 13		1320-½		358 (400-½)		1320-⅝		358 (400-⅝)					
CIRCLING		1400-1 438 (500-1)		1420-1 458 (500-1)		1420-1½ 458 (500-1½)		1520-2 558 (600-2)					
HIRL Rwy 13-31 REIL Rwy 31													
FAF to MAP 4.7 NM													
Knots		60		90		120		150		180			
Min:Sec		4:42		3:08		2:21		1:53		1:34			

132° 4.7 NM from FAF

ILS or LOC RWY 13

EC-1, 31 DEC 2020 to 28 JAN 2021

EC-1, 31 DEC 2020 to 28 JAN 2021