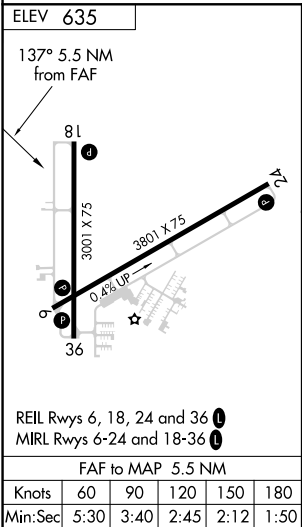
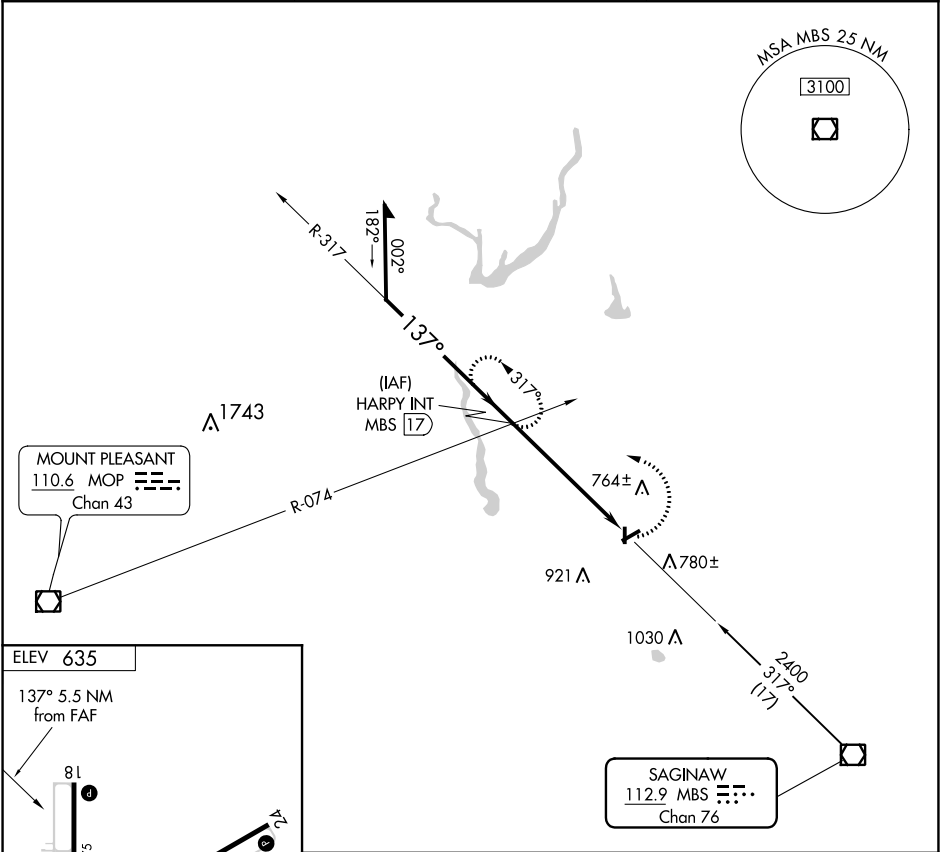


VOR/DME MBS <b>112.9</b> Chan <b>76</b>	APP CRS <b>137°</b>	Rwy Idg TDZE Apt Elev <b>635</b>	<b>N/A</b> <b>N/A</b>
---	------------------------	---	--------------------------

VOR-A  
JACK BARSTOW (IKW)

<p><b>⚠</b> When local altimeter setting not received, use MBS Intl altimeter setting and increase all MDA 40 feet. Circling Rwy 18, 36 NA at night. <b>Rwy 18, 36 helicopter visibility reduction below 1 SM NA.</b></p>	<p>MISSED APPROACH: Climbing left turn to 2400 via heading 272° and MBS VOR/DME R-317 to HARPY INT/17 DME and hold.</p>
---	---

AWOS-3 <b>119.525</b>	GREAT LAKES APP CON ★ <b>126.45 235.625</b>	UNICOM <b>122.8 (CTAF) 0</b>
--------------------------	--	---------------------------------



Remain within 10 NM	HARPY INT MBS 17	2400 hdg 272°	MBS R-317	HARPY INT
2400	317°	2400	137°	2400
5.5 NM				
CATEGORY	A	B	C	D
CIRCLING	1140-1	505 (600-1)	1140-1½ 505 (600-1½)	NA

EC-1, 31 DEC 2020 to 28 JAN 2021

EC-1, 31 DEC 2020 to 28 JAN 2021