

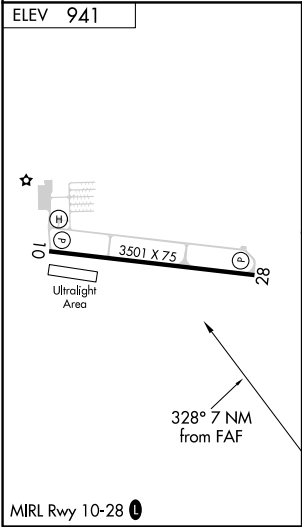
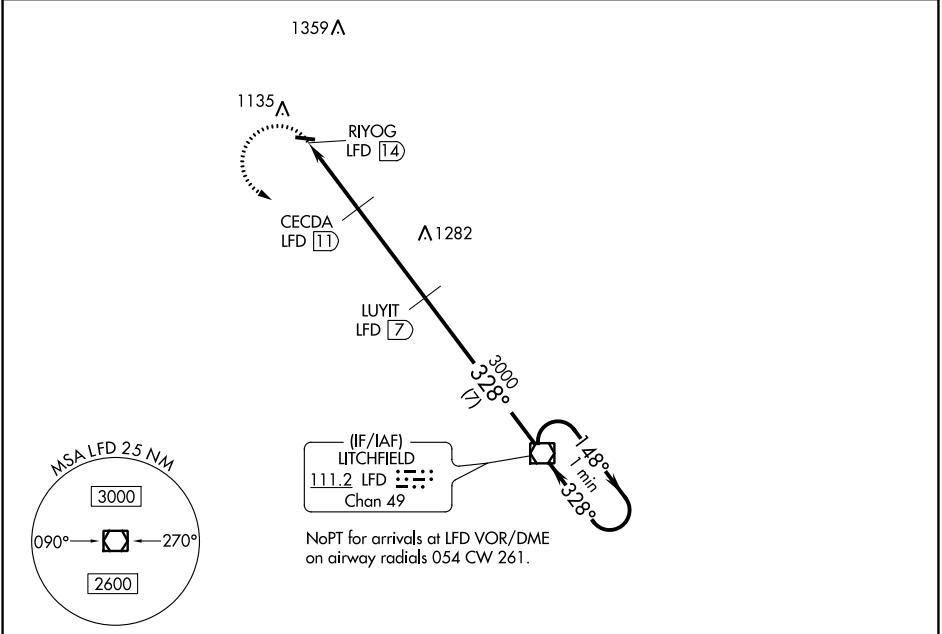
VOR/DME LFD	APP CRS	Rwy Idg	NA
111.2	328°	TDZE	NA
Chan 49		Apt Elev	941

VOR/DME-A
BROOKS FIELD (RMY)

⚠ When local altimeter setting not received, use Battle Creek altimeter setting and increase all MDA 40 feet. Helicopter visibility reduction below 3/4 SM NA. Night landing: Rwy 10 NA.

MISSED APPROACH: Climbing left turn to 3000 direct LFD VOR/DME and hold.

AWOS-3 120.025	GREAT LAKES APP CON ★ 119.2 239.25	UNICOM 122.8 (CTAF) 0
-------------------	---------------------------------------	--------------------------



A 1562				
3000 LFD				
LUYIT LFD 7				
CECD A LFD 11				
RIYOG LFD 14				
1680				
328° 3000 148° 3000				
3 NM 4 NM 7 NM				
CATEGORY	A	B	C	D
CIRCLING	1500-1	559 (600-1)	1500-1½ 559 (600-1½)	NA

EC-1, 31 DEC 2020 to 28 JAN 2021

EC-1, 31 DEC 2020 to 28 JAN 2021