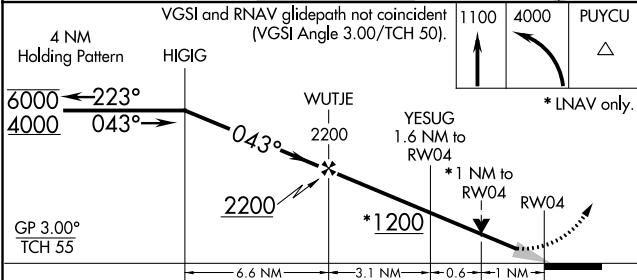
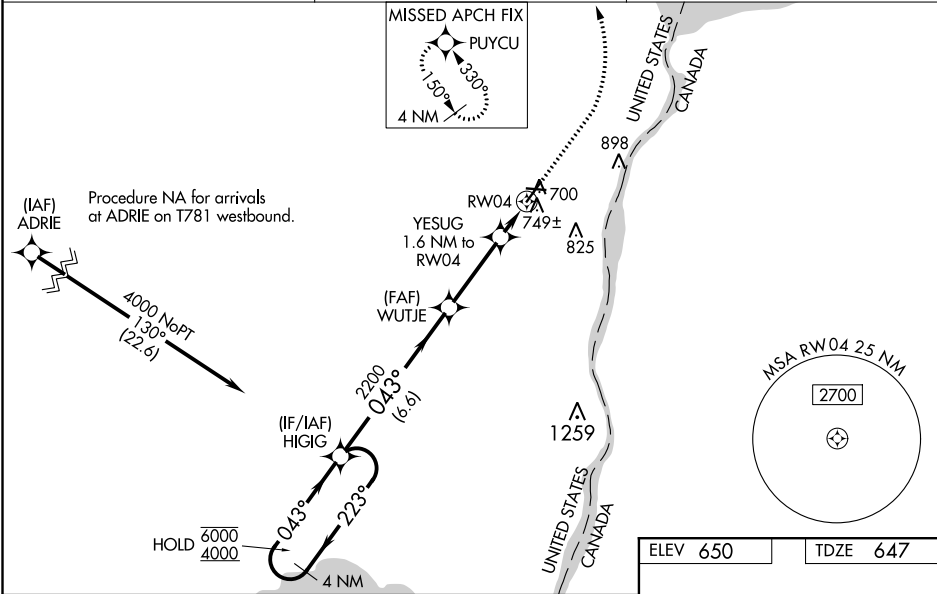


WAAS CH <b>53523</b> <b>W04A</b>	APP CRS <b>043°</b>	Rwy Idg TDZE <b>647</b> Apt Elev <b>650</b>	<b>5104</b>
--	------------------------	---	-------------

RNAV (GPS) RWY 4  
ST CLAIR COUNTY INTL (PHN)

RNP APCH.	<div><div><div></div><div></div></div><div><p>Circling Rwy 10, 22, 28 NA at night. For uncompensated Baro-VNAV systems, LNAV/VNAV NA below -16°C or above 54°C. For inoperative ALS, increase LNAV/VNAV all Cats visibility to ¾ mile and LNAV Cat C/D visibility to 1 SM.</p></div></div>	<div><div><div></div><div></div></div><div><p>MALSRL</p></div></div> <div><p>MISSED APPROACH: Climb to 1100 then climbing left turn to 4000 direct PUYCU and hold, continue climb-in-hold to 4000.</p></div>
-----------	--	--

AWOS-3 <b>118.375</b>	SELFREDGE APP CON ★ <b>119.6 391.9</b>	UNICOM <b>123.05 (CTAF) 0</b>
--------------------------	---	----------------------------------



CATEGORY	A	B	C	D
LPV DA		847-½	200 (200-½)	
LNAV/VNAV DA		930-½	283 (300-½)	
LNAV MDA	1000-½	353 (400-½)	1000-⅝	353 (400-⅝)
CIRCLING	1160-1	510 (600-1)	1260-1¾ 610 (700-1¾)	1260-2 610 (700-2)

