

LOM PH 332	APP CRS 043°	Rwy Idg TDZE Apt Elev 5104 647 650	NDB RWY 4 ST CLAIR COUNTY INTL (PHN)
----------------------	------------------------	--	--

▼

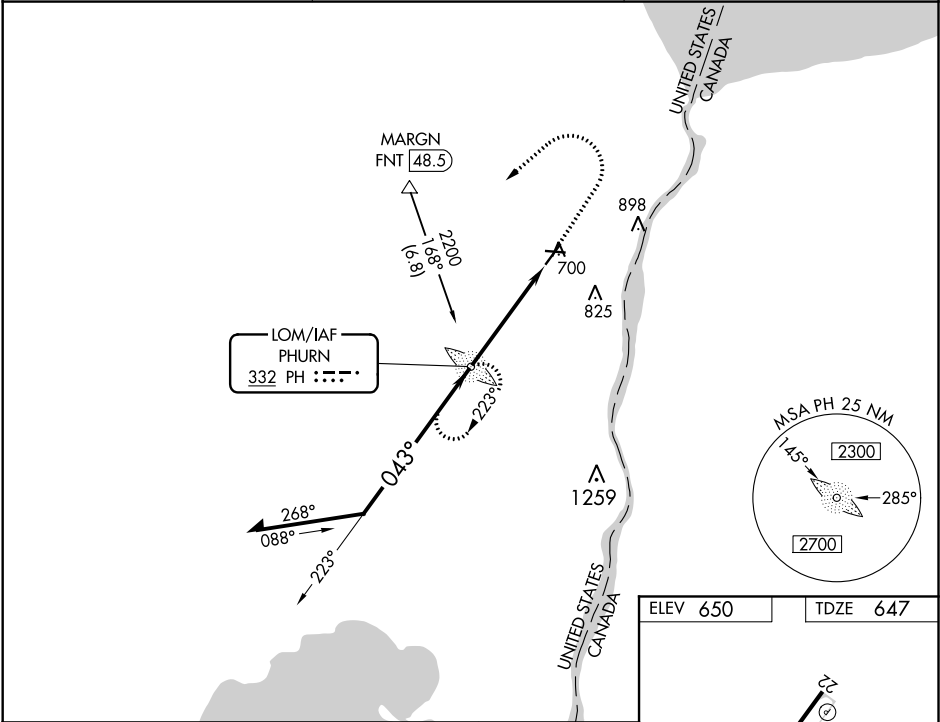
▲ NA

When local altimeter setting not received, use Troy altimeter setting and increase all MDA 100 feet, increase S-4 and Circling Cats C and D visibility ¼. For inoperative MALSR, increase S-4 Cats C and D visibility to 1¾ mile. For inoperative MALSR when using Troy altimeter setting, increase S-4 Cat D visibility to 1¾ mile. Night landing: Rwy 10, 22, 28 NA.

MALSR

MISSED APPROACH:
Climb to 2500 then climbing left turn to 4000 direct PHURN LOM and hold.

AWOS-3 118.375	SELFREDGE APP CON ★ 119.6 391.9	UNICOM 123.05 (CTAF) 0
--------------------------	---	----------------------------------



Remain within 10 NM

2500

4000

PH

CATEGORY

A

B

C

D

S-4

1160-¾ 513 (600-¾)

1160-1 513 (600-1)

CIRCLING

1160-1 510 (600-1)

1260-1¾ 610 (700-1¾)

1260-2 610 (700-2)

ELEV 650

TDZE 647

HIRL Rwy 4-22

MIRL Rwy 10-28

REIL Rwy 10, 22, and 28

FAF to MAP 4.6 NM

Knots	60	90	120	150	180
Min:Sec	4:36	3:04	2:18	1:50	1:32

PORT HURON, MICHIGAN

Amdt 5 18SEP14

42°55'N-82°32'W

ST CLAIR COUNTY INTL (PHN)

NDB RWY 4