

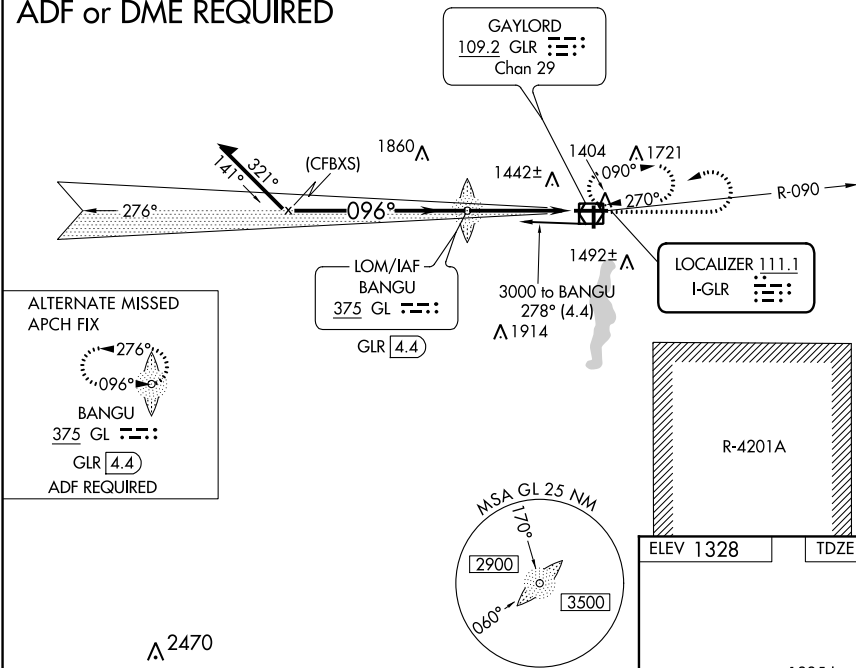
ILS or LOC RWY 9  
GAYLORD RGNL (GLR)

MALSR

**MISSED APPROACH:**  
Climb to 3000 then left  
turn direct GLR VOR/  
DME and hold.

UNICOM  
122.8 (CTAF) **L**

ADF or DME REQUIRED



BANGU LOM  
GLR (4.4)

Remain  
within 10 NM

$$\frac{\text{GS } 3.00^\circ}{\text{TCH } 50}$$

2700

26

300  
▲GLR  


REIL Rwy 27, 18 and 36 **1**  
MIRL Rwy 18-36 **1**  
HIRL Rwy 9-27 **1**

FAF to MAP 3.9 NM					
Knots	60	90	120	150	180
Min:Sec	3:54	2:36	1:57	1:34	1:18