

VOR/DME IMT	APP CRS	Rwy Idg	3808
111.2	323°	TDZE	1131
Chan 49		Apt Elev	1182

VOR RWY 31

FORD (IMT)

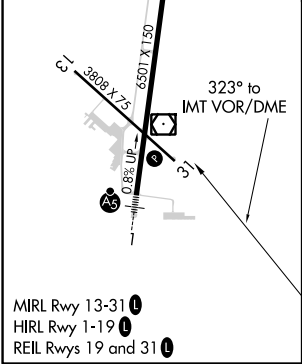
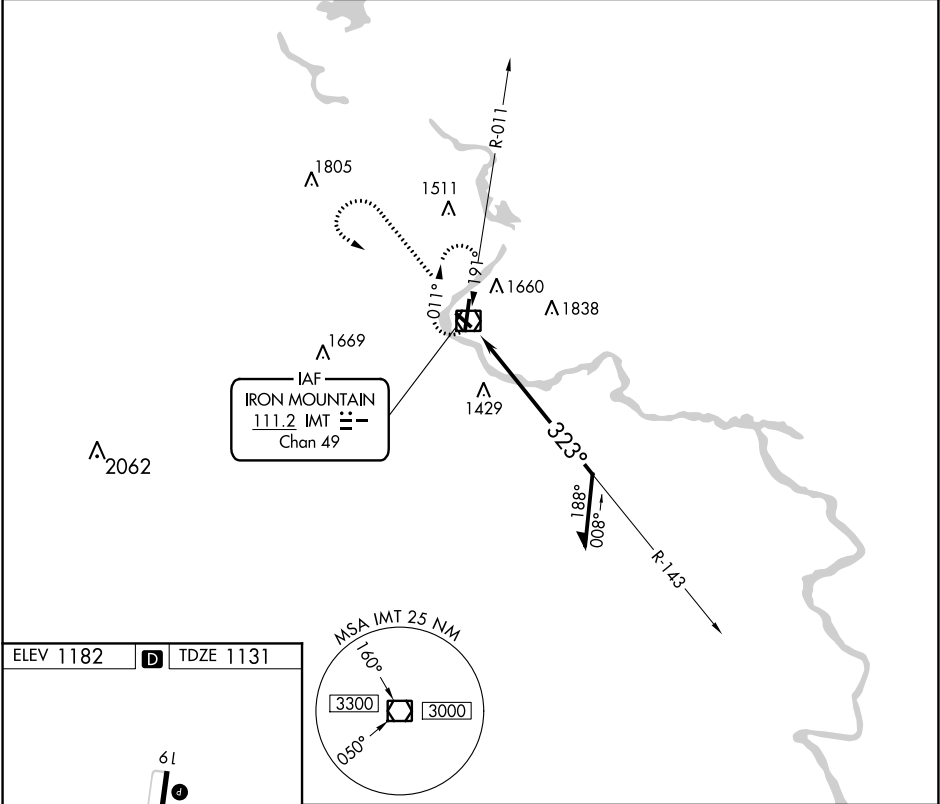
▼




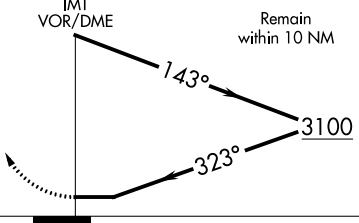

▲

Circling NA northeast of Rwys 19 and 31. Helicopter visibility reduction below 1 SM NA. When local altimeter setting not received, use Escanaba altimeter setting and increase all MDA 180 feet, increase S-31 Cat B visibility ¼ SM, Cat C visibility ¾ SM, Cat D visibility ½ SM, and Circling Cat B visibility ¼ SM, Cat C/D visibility ¾ SM.

MISSED APPROACH: Climb to 3100 then left turn direct IMT VOR/DME and hold.

ASOS	MINNEAPOLIS CENTER	UNICOM
119.025	121.25 322.5	122.8 (CTAF) 0



3100			IMT 					
CATEGORY	A		B		C		D	
S-31	1760-1		629 (600-1)		1760-1¾ 629 (600-1¾)		1760-2 629 (600-2)	
 CIRCLING	1760-1 578 (600-1)		1780-1 598 (600-1)		1780-1¾ 598 (600-1¾)		1840-2 658 (700-2)	

EC-1, 31 DEC 2020 to 28 JAN 2021

EC-1, 31 DEC 2020 to 28 JAN 2021