

APP CRS <b>096°</b>	Rwy Idg TDZE Apt Elev	<b>3549</b> <b>727</b> <b>727</b>
------------------------	-----------------------------	---

RNAV (GPS) RWY 9

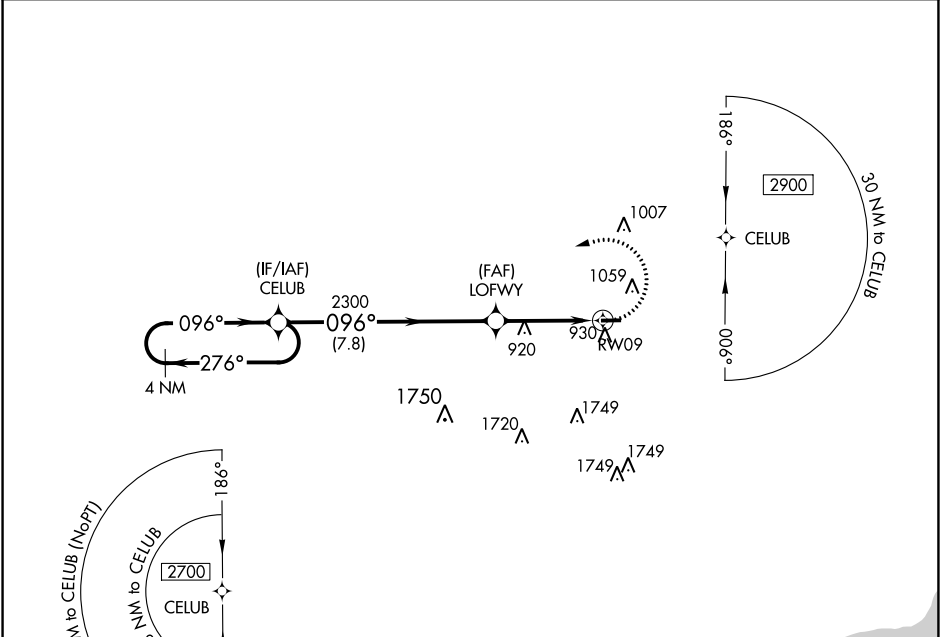
OAKLAND/TROY (VLL)

T

DME/DME RNP-0.3 NA. Straight-in Rwy 9 at night, operational VGSI required, remain on or above VGSI glidepath until threshold. Circling Rwy 27 at night. Rwy 9 helicopter visibility reduction below 1 SM NA.

MISSED APPROACH:  
Climbing left turn to 2700  
direct CELUB and hold.

AWOS-3 <b>119.475</b>	DETROIT APP CON <b>134.3 284.0</b>	UNICOM <b>123.05 (CTAF) 0</b>
--------------------------	---------------------------------------	----------------------------------



ELEV 727

TDZE 727

4 NM Holding Pattern

2700 CELUB

2700 ← 276° 096° →

LOFWY

2300

3.75° TCH 44

RW09

7.8 NM 3.8 NM

096° to RW09

3549 X 60

0.7% UP

930

MIRL Rwy 9-27 0

CATEGORY	A	B	C	D
LNAV MDA	1220-1	493 (500-1)	1220-1⅜ 493 (500-1⅜)	NA
CIRCLING	1400-1	673 (700-1)	1400-2 673 (700-2)	NA

EC-1, 31 DEC 2020 to 28 JAN 2021

EC-1, 31 DEC 2020 to 28 JAN 2021