

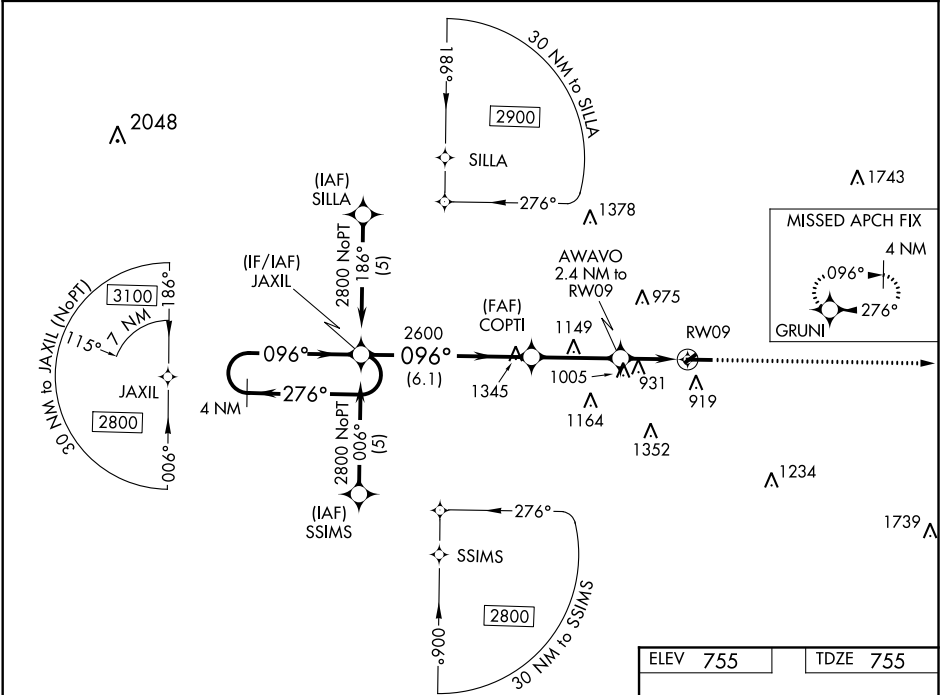
APP CRS	Rwy Idg	5000
096°	TDZE	755
	Apt Elev	755

RNAV (GPS) RWY 9
MOUNT PLEASANT MUNI (MOP)

⚠ DME/DME RNP-0.3 NA. When local altimeter setting not received use Altimeter setting and increase all MDA 60 feet, increase RNAV Cat C/D and Circling Cat C visibility ¼ mile. Circling NA to Rwy 5 and 23. Rwy 9 helicopter visibility reduction below ¾ SM NA.

MISSED APPROACH: Climb to 2800 direct GRUNI and hold.

AWOS-3 133.025	GREAT LAKES APP CON ★ 126.45 235.625	UNICOM 123.0 (CTAF) 0
-------------------	---	--------------------------



4 NM Holding Pattern		VGSI and RNAV glidepath not coincident (VGSI Angle 3.00/TCH 42).		2800	GRUNI
JAXIL		COPTI		AWAVO	RW09
2800		2600		1540	27
6.1 NM		3.2 NM		2.4 NM	
CATEGORY	A	B	C	D	
RNAV MDA	1320-1	565 (600-1)	1320-1½ 565 (600-1½)	1320-1¾ 565 (600-1¾)	
CIRCLING	1320-1	565 (600-1)	1320-1½ 565 (600-1½)	1360-2 605 (700-2)	
					REIL Rwy 9 and 27 0 MIRL Rwy 9-27 0

EC-1, 31 DEC 2020 to 28 JAN 2021

EC-1, 31 DEC 2020 to 28 JAN 2021