

VOR/DME MBL	APP CRS	Rwy Idg	5501
111.4	110°	TDZE	621
Chan 51		Apt Elev	621

VOR RWY 10

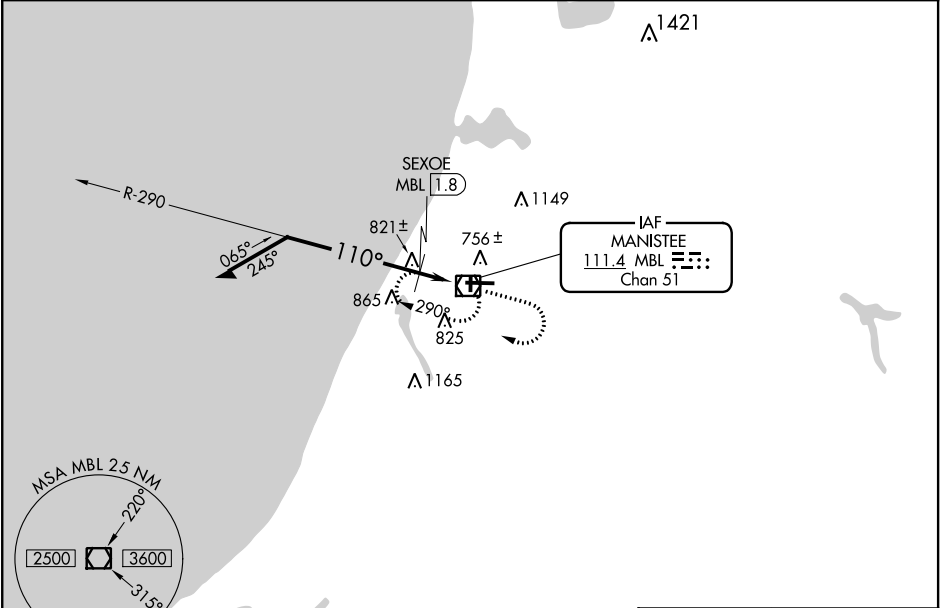
MANISTEE COUNTY-BLACKER (MBL)

⚠

When local alimeter setting not received, use Ludington alimeter setting and increase all MDA 60 feet. Increase S-10 Cat C and D and Circling Cat C visibility 1/8 mile, increase SEXOE FIX minimums S-10 Cat C and D visibility 1/8 mile, and Cat C Circling visibility 1/4 mile. Helicopter visibility reduction below 3/4 SM NA. Night landing Rwy 1/19 NA.

MISSED APPROACH: Climb to 2300 then right turn direct MBL VOR/DME and hold.

AWOS-3PT 111.4	MINNEAPOLIS CENTER 120.85 322.35	UNICOM 122.8 (CTAF) 0
-------------------	-------------------------------------	--------------------------



VGSI and descent angles not coincident (VGSI Angle 3.00/TCH 29).
Remain within 10 NM

2300

290°

110°

SEXOE MBL 1.8

*1220

2.98°

TCH 55

1.7 NM

*1280 when using Ludington alimeter setting.

ELEV 621

TDZE 621

2300

MBL

727±

61

640±

5501 X 100

2721

678±

110° to MBL VOR/DME

CATEGORY	A	B	C	D
S-10	1220-1	599 (600-1)	1220-1¾	599 (600-1¾)
CIRCLING	1220-1	599 (600-1)	1220-1¾ 599 (600-1¾)	1300-2¼ 679 (700-2¼)
SEXOE FIX MINIMUMS (DME REQUIRED)				
S-10	1080-1	459 (500-1)	1080-1¾	459 (500-1¾)
CIRCLING	1120-1 499 (500-1)	1160-1 539 (600-1)	1200-1½ 579 (600-1½)	1300-2¼ 679 (700-2¼)

HIRL Rwys 10-28 0

MIRL Rwys 1-19 0

REIL Rwys 10 0