

LOC I-MBL	APP CRS	Rwy Idg	5501
108.35	277°	TDZE	621
		Apt Elev	621

ILS or LOC RWY 28
MANISTEE COUNTY-BLACKER (MBL)

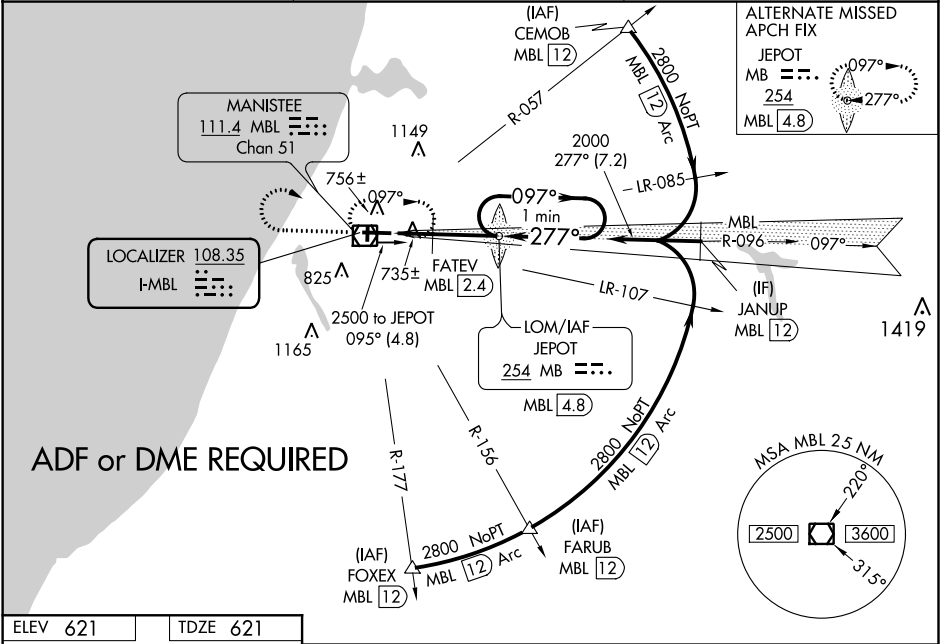
NA

Night landing: Rwy 1/19 NA. When local altimeter not received, use Ludington altimeter setting and increase all DA 50 feet and all MDA 60 feet; increase S-LOC 28 Cat C/D visibility ¼ mile, and Circling Cat C visibility ¼ mile. FATEV FIX minimums: increase S-LOC 28 Cat C/D visibility ½ mile and Circling Cat C ¼ mile.

MALSR

MISSED APPROACH: Climb to 1600 then climbing right turn to 2500 direct MBL VOR/DME and hold, continue climb-in-hold to 2500.

AWOS-3PT 111.4	MINNEAPOLIS CENTER 120.85 322.35	UNICOM 122.8 (CTAF) 0
-------------------	-------------------------------------	--------------------------



ELEV 621	TDZE 621
----------	----------

ADF or DME REQUIRED

HIRL Rwys 10-28 0

MIRL Rwys 1-19 0

REIL Rwys 10 0

FAF to MAP 3.9 NM

Knots	60	90	120	150	180
Min:Sec	3:54	2:36	1:57	1:34	1:18

1600 2500 MBL

VGSI and ILS glidepath not coincident (VGSI Angle 3.00/TCH 45).

JEPOT LOM MBL 4.8

One Minute Holding Pattern

1934 097° 2300

2000 277°

GS 3.00° TCH 50

*1160 *1220 when using Ludington altimeter setting.

1.5 NM 2.4 NM

CATEGORY	A	B	C	D
S-ILS 28	821-½ 200 (200-½)			
S-LOC 28	1160-½	539 (600-½)	1160-1	539 (600-1)
CIRCLING	1160-1	539 (600-1)	1200-1½ 579 (600-1½)	1300-2¼ 679 (700-2¼)
FATEV FIX MINIMUMS				
S-LOC 28	1000-½	379 (400-½)	1000-¾	379 (400-¾)
CIRCLING	1120-1 499 (500-1)	1160-1 539 (600-1)	1200-1½ 579 (600-1½)	1300-2¼ 679 (700-2¼)

EC-1, 31 DEC 2020 to 28 JAN 2021

EC-1, 31 DEC 2020 to 28 JAN 2021