

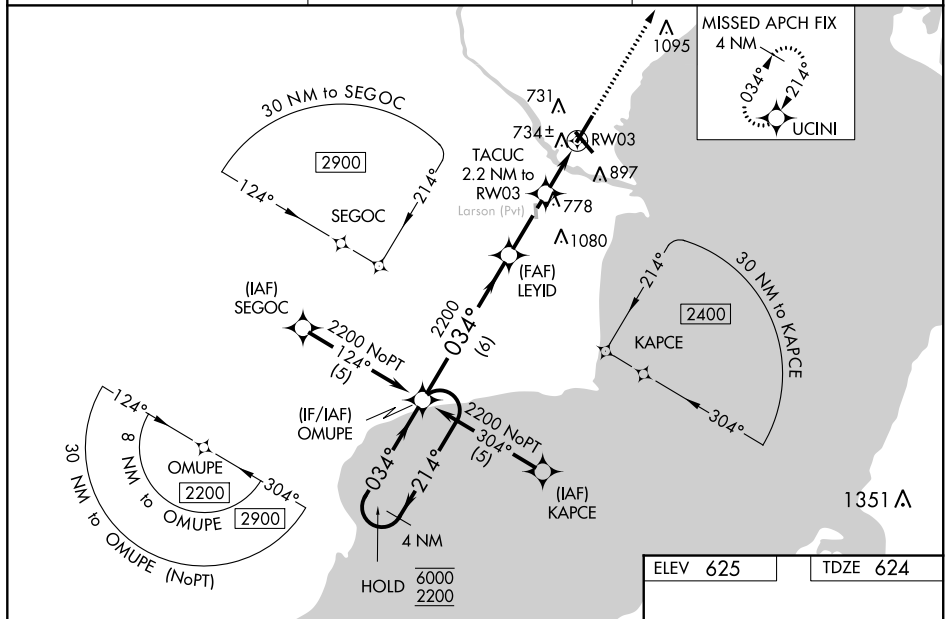
RNAV (GPS) RWY 3  
MENOMINEE RGNL (MNM)


**⚠** Circling Rwy 14, 32 NA at night. Baro-VNAV and VDP NA when using Sturgeon Bay altimeter setting. For uncompensated Baro-VNAV systems, LNAV/VNAV NA below -16°C or above 54°C. When local altimeter setting not received, use Sturgeon Bay altimeter setting and increase all DA/MDA 60 feet, increase Circling Cat C/D visibility ½ SM. For Inop MALSR when using Sturgeon Bay altimeter setting increase LNAV MDA visibility Cat C/D to 1 ½. Inop table does not apply to LPV and LNAV/VNAV all Cats and LNAV MDA Cats A/B.

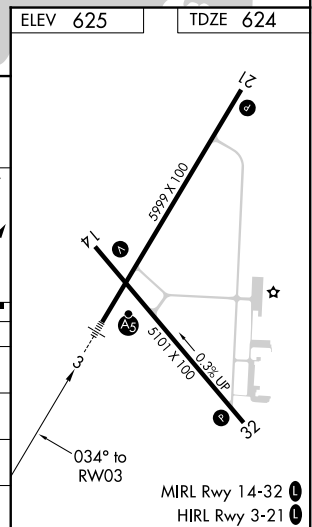


**MISSED APPROACH:**  
Climb to 2300 direct  
UCINI and hold.

|                          |   |                                 |
|--------------------------|---|---------------------------------|
| AWOS-3PT<br><b>109.6</b> | GREEN BAY APP CON ★<br><b>120.3 338.2</b> | UNICOM<br><b>122.8 (CTAF) 0</b> |
|--------------------------|---|---------------------------------|



| CATEGORY   | A                   | B                    | C                    | D |
|--|---------------------|----------------------|----------------------|---|
| LPV DA   | 824-1 200 (200-1)   |                      |                      |   |
| LNAV/<br>VNAV DA   | 1150-1½ 526 (600-1) |                      |                      |   |
| LNAV MDA   | 1000-1 376 (400-1)  |                      |                      |   |
|  CIRCLING | 1200-1 575 (600-1)  | 1200-1½ 575 (600-1½) | 1380-2½ 755 (800-2½) |   |



EC-1. 31 DEC 2020 to 28 JAN 2021