

| | | | |
|-----------|---------|----------|------|
| LOC I-TNQ | APP CRS | Rwy Idg | 5999 |
| 108.7 | 034° | TDZE | 624 |
| | | Apt Elev | 625 |

ILS or LOC RWY 3

MENOMINEE RGNL (MNM)

ADF required. ADF or RADAR required for procedure entry.

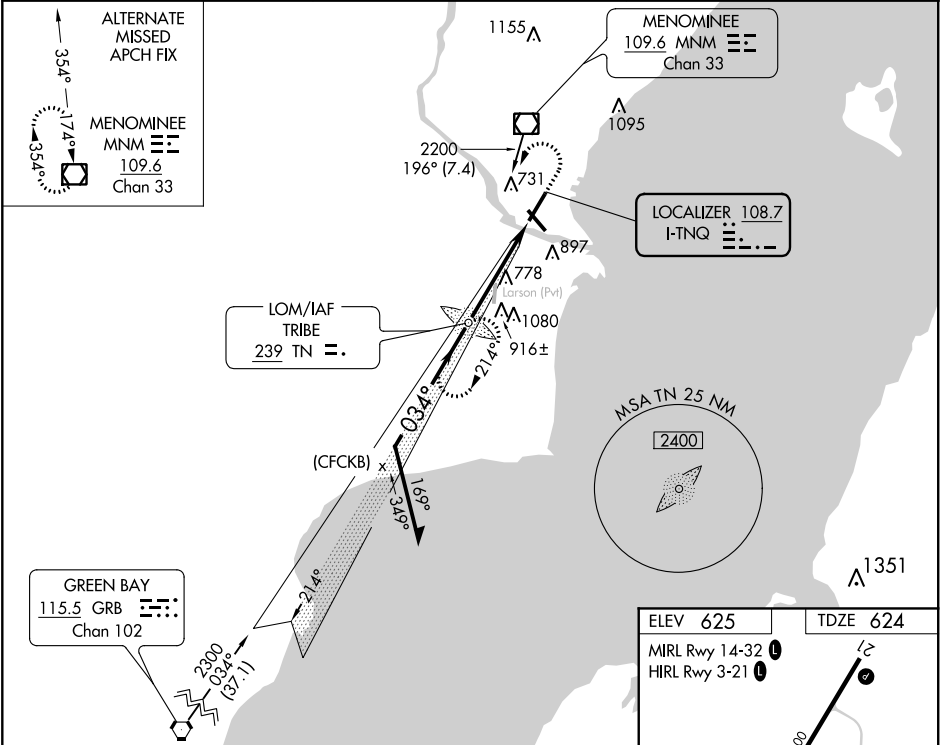
NA

Circling Rwy 14, 32 NA at night. Autopilot coupled approach NA below 1574. Inop table does not apply. When local altimeter setting not received, use Sturgeon Bay altimeter setting and increase all DA/MDA 60 feet, Circling Cat C/D visibility ¼ SM. For inop ALS when using Sturgeon Bay altimeter setting, increase S-LOC 3 Cat C/D visibility to 1½ SM.

MALSR

MISSED APPROACH:
Climb to 2200 then
left turn direct
TRIBE LOM and hold.

| | | |
|----------|--------------------|----------------|
| AWOS-3PT | GREEN BAY APP CON★ | UNICOM |
| 109.6 | 120.3 338.2 | 122.8 (CTAF) 0 |



| | | | |
|---------------------|--------|-------------|---|
| Remain within 10 NM | | | |
| TRIBE LOM | | | |
| 2200 2050 | | | |
| 2200 034° | | | |
| GS 3.00° TCH 50 | | | |
| 4.3 NM | | | |
| CATEGORY | A | B | C D |
| S-ILS 3 | | 824-1 | 200 (200-1) |
| S-LOC 3 | | 980-1 | 356 (400-1) |
| CIRCLING | 1200-1 | 575 (600-1) | 1200-1½ 575 (600-1½) 1380-2½ 755 (800-2½) |

