

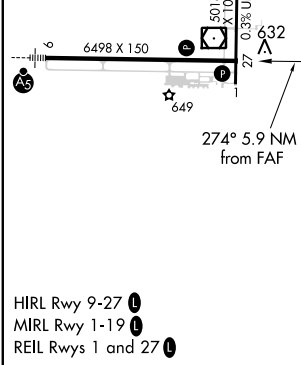
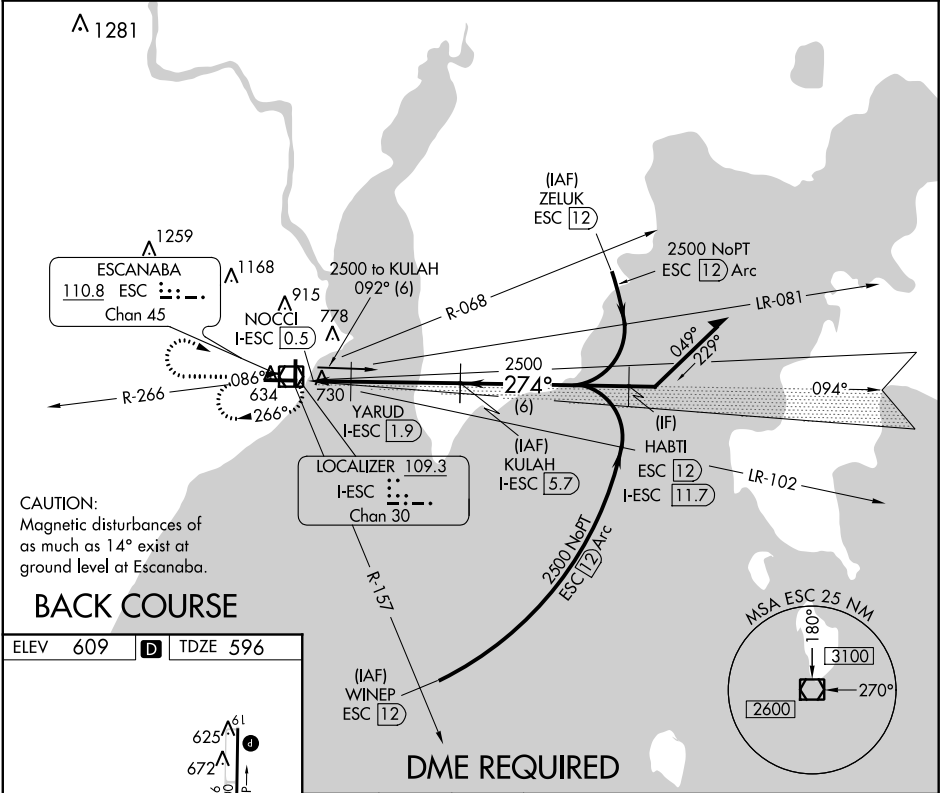
LOC/DME I-ESC 109.3 Chan 30	APP CRS 274°	Rwy Idg TDZE Apt Elev	6498 596 609
--	------------------------	-----------------------------	---

LOC/DME BC RWY 27
DELTA COUNTY (ESC)

⚠ Rwy 27 Straight-In and Circling and Circling to Rwy 19 NA at night. Helicopter visibility reduction below 1 SM NA. When local altimeter setting not received, use Marquette altimeter setting and increase all MDA 180 feet and S-27 Cat C and D visibility 3/8 mile and Circling Cat C visibility 1/2 mile and Cat D visibility 1/4 mile.

MISSED APPROACH: Climb to 2500 then right turn direct ESC VOR/DME and hold.

AWOS-3PT 121.425	MINNEAPOLIS CENTER 127.65	UNICOM 122.8 (CTAF) 0
----------------------------	-------------------------------------	---------------------------------



<div>2500</div> <div><div><div><div></div><div>↑</div></div><div><div></div><div>↷</div></div><div><div></div><div>ESC</div><div><div></div><div></div></div></div></div></div>		<div>KULAH</div> <div>I-ESC 5.7</div> <div>Remain within 10 NM</div>		
<div>ESC</div> <div>VOR/DME</div> <div>NOCCI</div> <div>I-ESC 0.5</div> <div>I-ESC</div> <div>YARUD</div> <div>I-ESC 1.9</div>		<div>094°</div> <div>274°</div> <div>2500</div> <div>2500</div>		
<div>274°</div> <div>1280</div> <div>2.98°</div> <div>TCH 53</div> <div>Disregard glide slope indications.</div> <div>Use I-ESC DME when on the localizer course.</div>				
<div>0.7</div> <div>1.3 NM</div> <div>3.9 NM</div>				
CATEGORY	A	B	C	D
S-27	1040-1 444 (500-1)		1040-1 ³ / ₈	444 (500-1 ³ / ₈)
CIRCLING	1060-1 451 (500-1)	1080-1 471 (500-1)	1280-2 671 (700-2)	1480-2 ³ / ₄ 871 (900-2 ³ / ₄)

EC-1, 31 DEC 2020 to 28 JAN 2021

EC-1, 31 DEC 2020 to 28 JAN 2021