

ILS or LOC RWY 9
DELTA COUNTY (ESC)

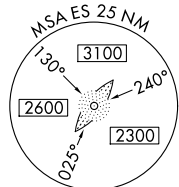
MALSR

A5

+

-

MISSED APPROACH: Climb to 2100 then climbing right turn to 2500 direct ESC VOR/DME and hold.

UNICOM
122.8 (CTAF) **L**

2500 NoPT
to REBON
39° (3.3) and

(IAF) 
VUKFI

RE
I-ES

EBON
C 12.

3

ES
LR-2

SC
280 -

25

500 to
270° (

LOM
5.7)

 Λ

915
778

The graph shows a line that starts at a low point on the left, rises steeply to a peak, and then levels off to the right. This represents a rapid initial increase followed by a period of stability.

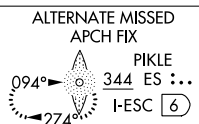
Chan .

45

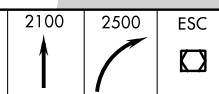
500

N 202

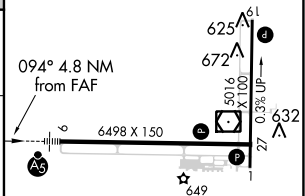
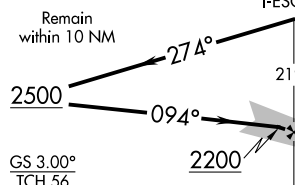
CAUTION: Magnetic disturbances of as much as 14° exist at ground level at Escanaba.



Use |-ESC DME when on the |ocalizer course.



* LOC only



HIRL Rwy 9-27 L					
MIRL Rwy 1-19 L					
REIL Rwy 1 and 27 L					
FAF to MAP 4.8 NM					
Knots	60	90	120	150	180
Min:Sec	4:48	3:12	2:24	1:55	1:36