

WAAS CH 45809 W31A	APP CRS 313°	Rwy Idg 6500 TDZE 1070 Apt Elev 1095
--	------------------------	---

RNAV (GPS) RWY 31
HOUGHTON COUNTY MEMORIAL (CMX)

RNP APCH.

T Inop table does not apply to LNAV Cat D. For uncompensated Baro-VNAV systems, LNAV/VNAV NA below -17°C or above 46°C. For inop ALS, increase LPV visibility all Cats to 1 SM, increase LNAV/VNAV Cat D visibility to 1 SM.

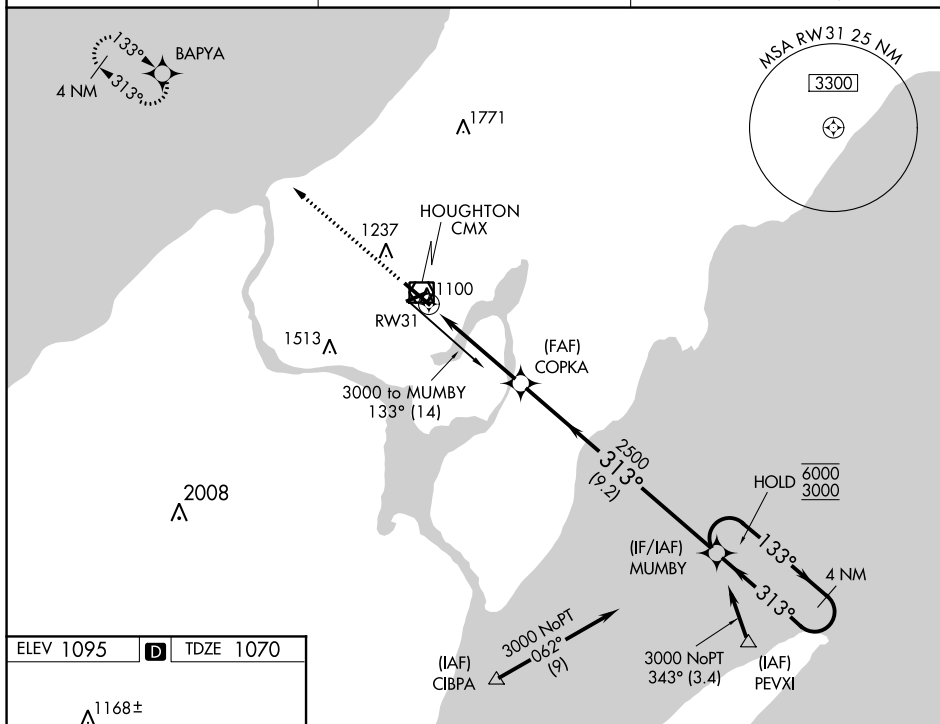

MALSR



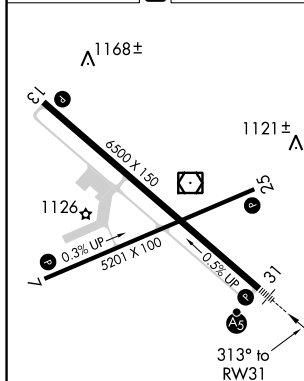
MISSED APPROACH:
Climb to 3700 direct
BAPYA and hold.

ASOS
125.675

MINNEAPOLIS CENTER
133.55 379.1

UNICOM
122.7 (CTAF) 

ELEV 1095	D	TDZE 1070
-----------	----------	-----------



MIRL Rwy 7-25 **L**
REIL Rwys 7, 13 and 25 **L**
HIRL Rwy 13-31 **L**

*** LNAV only.**

3700 **BAPYA**

MUMBY **4 NM** **Holding Pattern**

COPKA

RW31 *** 0.9 NM to RW31**

133° **313°**

6000 **3000**

GP 3.00° **TCH 47**

0.9 **3.4 NM** **9.2 NM**

CATEGORY	A	B	C	D
LPV DA	1320-½ 250 (300-½)			
LNAV/DA	1367-½ 297 (300-½)			1367-¾ 297 (300-¾)
LNAV MDA	1420-½ 350 (400-½)			1420-1 350 (400-1)
CIRCLING	1560-1 465 (500-1)	1600-1 505 (600-1)	1680-1½ 585 (600-1½)	1820-2¼ 725 (700-2¼)