

APP CRS  
**320°**

Rwy Idg  
TDZE  
Apt Elev

**4000**  
**1001**  
**1001**

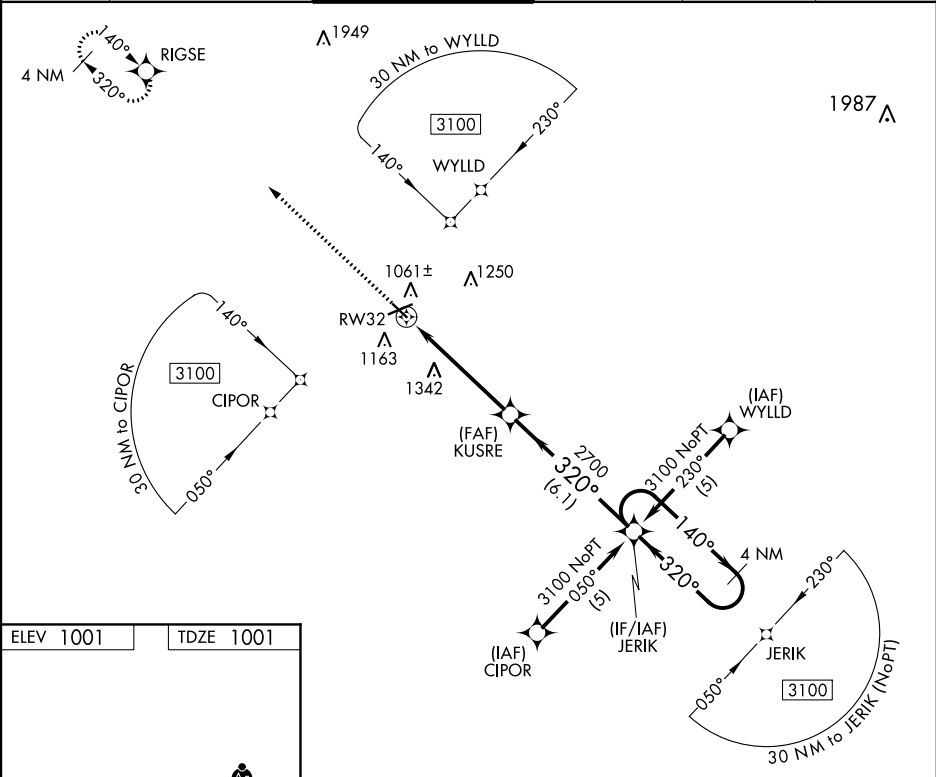
**RNAV (GPS) RWY 32**

JACKSON COUNTY-REYNOLDS FIELD (JXN)

Rwy 32 helicopter visibility reduction below ¾ SM NA.  
DME/DME RNP-0.3 NA.

MISSED APPROACH: Climb to 3000 direct RIGSE and hold.

ATIS <b>125.725</b>	GREAT LAKES APP CON ★ <b>127.3 335.575</b>	JACKSON TOWER ★ <b>128.475 (CTAF) 257.8</b>	GND CON <b>121.9</b>	CLNC DEL <b>121.9</b>	UNICOM <b>122.95</b>
------------------------	-----------------------------------------------	------------------------------------------------	-------------------------	--------------------------	-------------------------



ELEV 1001

TDZE 1001

HIRL Rwy 7-25  
MRL Rwy 14-32  
REIL Rwy 7 and 32

3000

RIGSE

VGSI and descent angles not coincident (VGSI Angle 3.50/TCH 31).

4 NM Holding Pattern

RW32

KUSRE

JERIK

320°

140°

320°

3100

5.1 NM

6.1 NM

CATEGORY	A	B	C	D
LNAV MDA	1560-1	559 (600-1)	1560-1½	559 (600-1½)
CIRCLING	1560-1	559 (600-1)	1660-1¾ 659 (700-1¾)	1660-2 659 (700-2)