

APP CRS
277°

Rwy Idg
TDZE
799

5000
799
799

RNAV (GPS) RWY 28
CHIPPEWA COUNTY INTL (CIU)

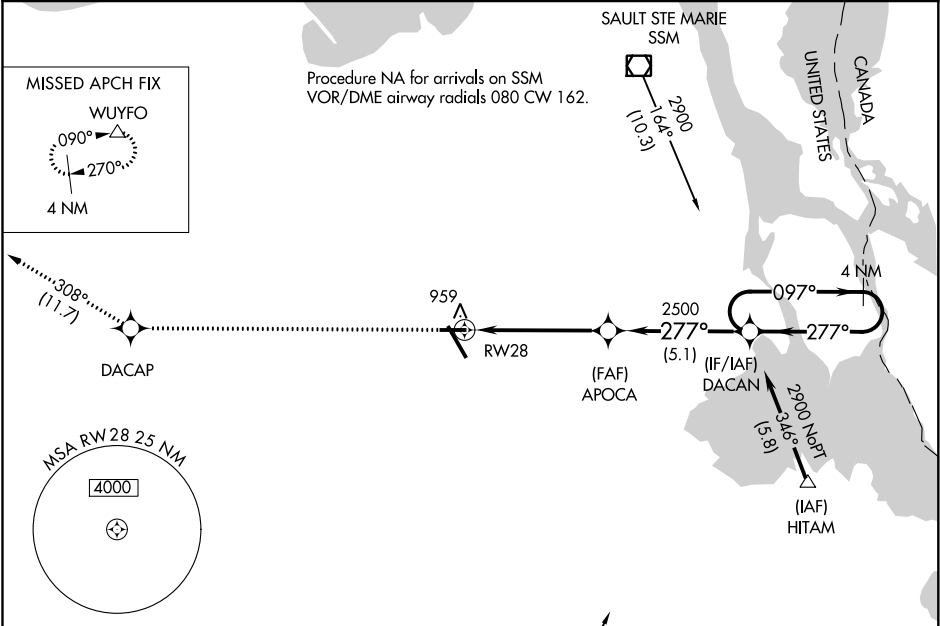
RNP APCH.
Rwy 28 helicopter visibility reduction below 1 SM NA. When local altimeter setting not received, use Sault Ste Marie Muni/Sanderson Field altimeter setting; increase all MDA 60 feet, increase LNAV and Circling visibility Cat C/D ¼ SM. Straight-in and Circling Rwy 28 NA at night.

MISSED APPROACH: Climb to 3000 direct DACAP and track 308° to WUYFO and hold.

AWOS-3PT
127.575

TORONTO CENTER
132.65 344.5

UNICOM
123.0 (CTAF)



ELEV 799

D

TDZE 799

REIL Rwy 10, 28 and 34

MIRL Rwy 10-28

HIRL Rwy 16-34

CATEGORY	A	B	C	D
LNAV MDA	1220-1	421 (500-1)	1220-1½	421 (500-1½)
CIRCLING	1260-1	461 (500-1)	1260-1½	1360-2
			461 (500-1½)	561 (600-2)