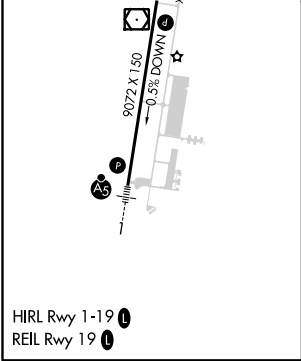
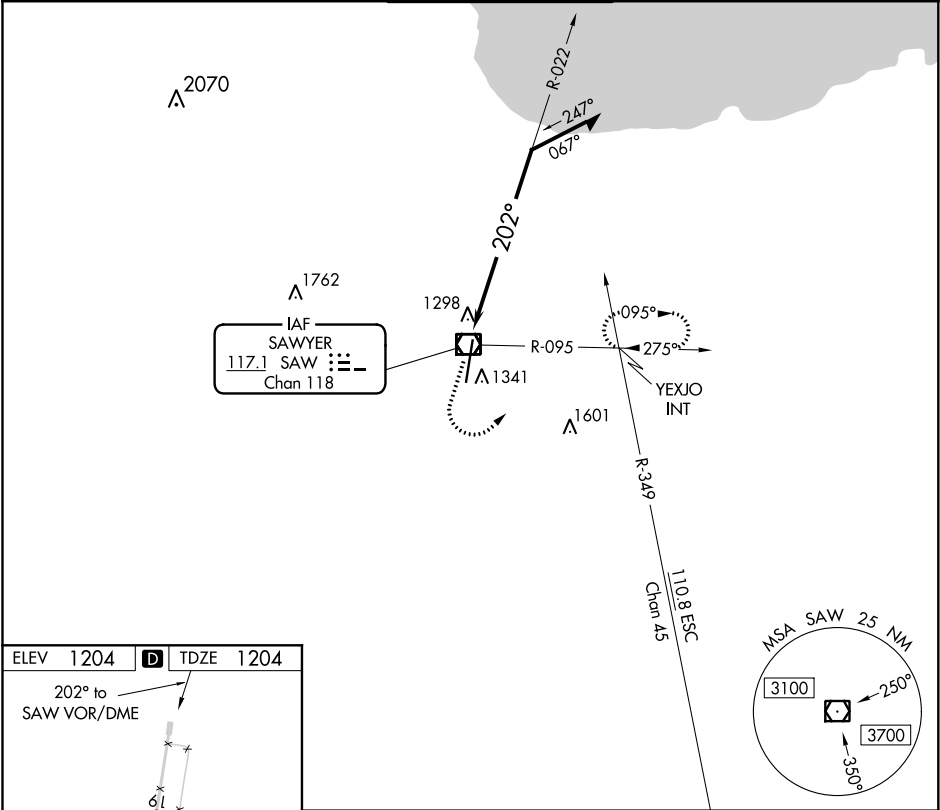


VOR/DME SAW	APP CRS	Rwy Idg	9072
<u>117.1</u>	202°	TDZE	1204
Chan 118		Apt Elev	1204

VOR RWY 19
SAWYER INTL (SAW)

▼		MISSED APPROACH: Climb to 1800 then climbing left turn to 3000 on heading 050° and SAW VOR/DME R-095 to YEXJO Int and hold.		
AWOS-3 118.375	MINNEAPOLIS CENTER 119.1 290.2	SAWYER TOWER ★ 119.975 (CTAF) 0	GND CON 121.65	UNICOM 122.7



1800	3000	SAW R-095	YEXJO INT	SAW VOR/DME	Remain within 10 NM
↑	hdg 050°				
CATEGORY	A	B	C	D	
S-19	1780-1	576 (600-1)	1780-1 ³ / ₈	576 (600-1 ³ / ₈)	
CIRCLING	1780-1	576 (600-1)	1820-1 ³ / ₄ 616 (700-1 ³ / ₄)	1820-2 616 (700-2)	