

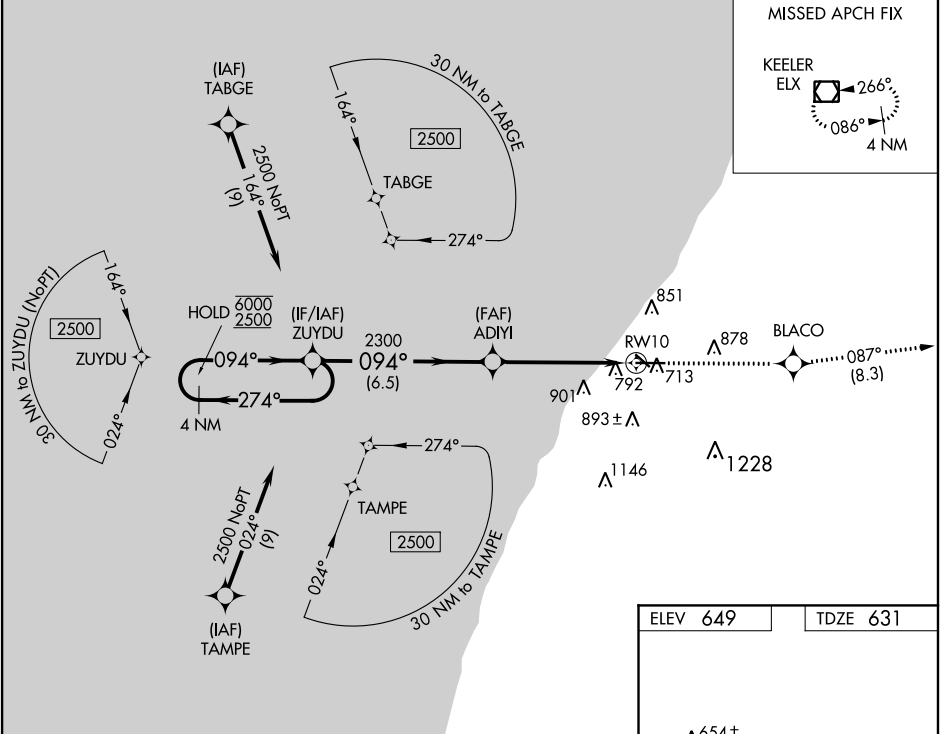
WAAS CH <b>86912</b> <b>W10A</b>	APP CRS <b>094°</b>	Rwy Idg TDZE <b>631</b> Apt Elev <b>649</b>
--	------------------------	---

RNAV (GPS) RWY 10

SOUTHWEST MICHIGAN RGNL (BEH)

RNP APCH.	MISSED APPROACH: Climb to 2500 direct BLACO and on track 087° to ELX VOR/DME and hold.
<div><div>▼</div><div>▲</div></div> <div>Rwy 10 helicopter visibility reduction below ¾ SM NA. For uncompensated Baro-VNAV systems, LNAV/VNAV NA below -20°C or above 54°C.</div>	

ASOS <b>121.55</b>	SOUTH BEND APP CON* <b>118.55 257.8</b>	SOUTH BEND CLNC DEL <b>119.7</b>	UNICOM <b>123.0 (CTAF) 0</b>
-----------------------	--	-------------------------------------	---------------------------------



4 NM Holding Pattern		ZUYDU	2500	BLACO	tr 087°	ELX
6000 2500		ADIYI	2300	RWY 10	* LNAV only	
GP 3.00° TCH 35		2300	2300	1.4 NM to RWY 10	* LNAV only	
		6.5 NM	3.7 NM	1.4 NM		
CATEGORY	A	B	C	D		
LPV DA	881-7/8		250 (300-7/8)			
LNAV/VNAV DA	1068-1½		437 (500-1½)			
LNAV MDA	1100-1 469 (500-1)		1100-1¾ 469 (500-1¾)			

