

HI-TACAN RWY 19

VORTAC APN 108.8 Chgn 25	APCH CRS 175°	Rwy Idg 9001 TDZE 683 Arpt Elev 690
--	-------------------------	--

JAL-718 [USAF]

ALPENA COUNTY RGNL (KAPN)

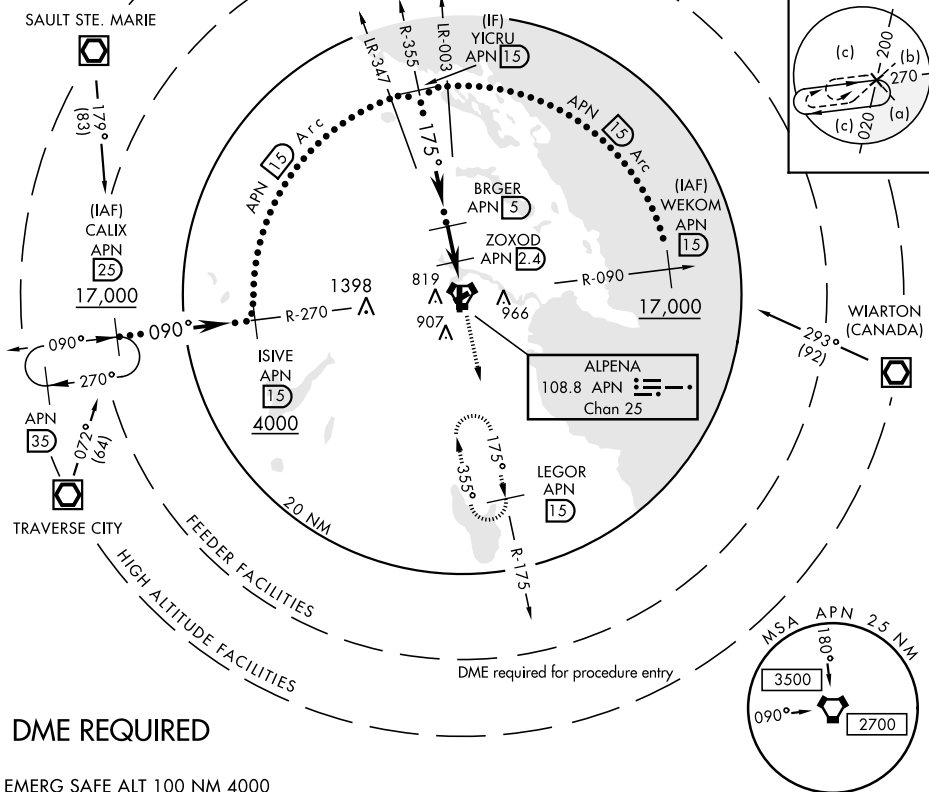
MISSED APPROACH: Climb to 5000 on APN R-175 to LEGOR (15 DME) and hold, continue climb in hold to 5000.

ASOS
120.675

ALPENA APP CON
128.425 379.3

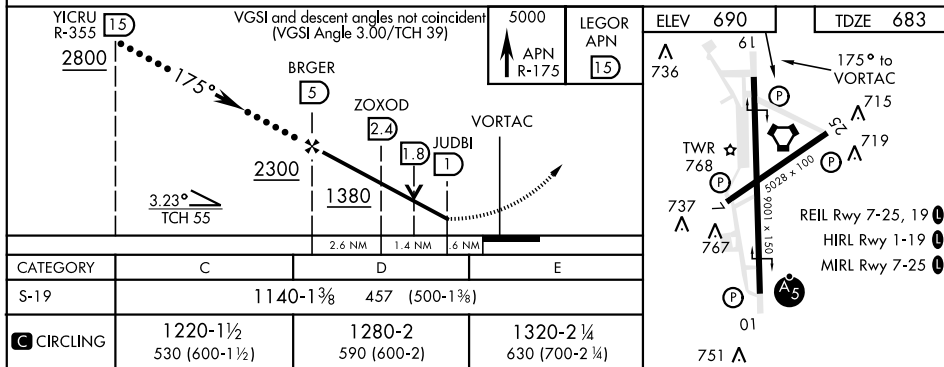
ALPENA TOWER ★
121.35 (CTAF) **L** 318.1

GND CON
121.9 275.8

UNICOM
122.95

DME REQUIRED

EMERG SAFE ALT 100 NM 4000



ALPENA, MICHIGAN

45°05'N-83°34'W

ALPENA COUNTY RGNL (KAPN)

HI-TACAN RWY 19

Amdt 5C 13AUG20

EC-1, 31 DEC 2020 to 28 JAN 2021