

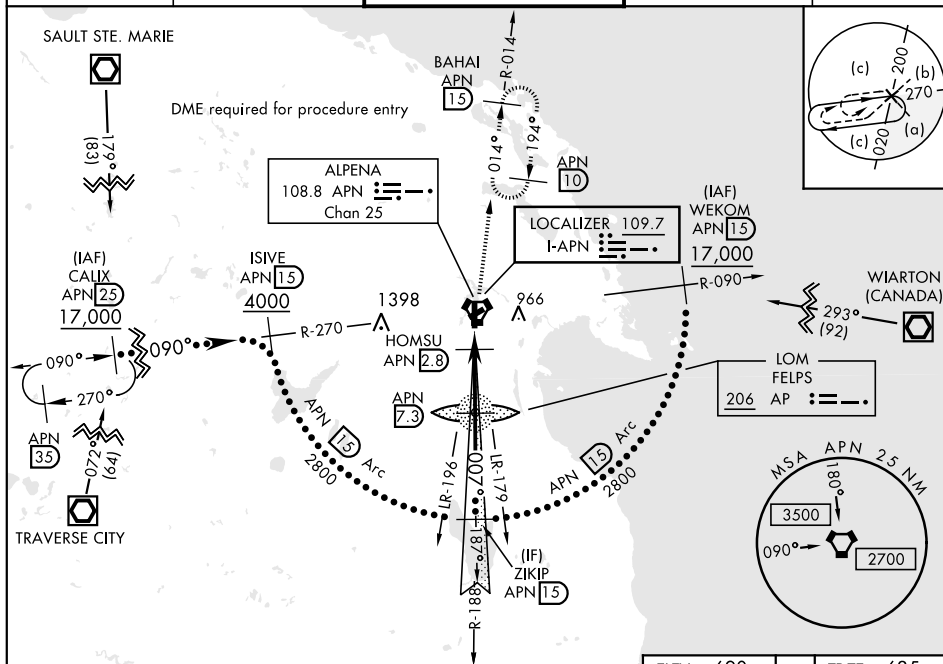
LOC I-APN 109.7	APCH CRS 007°	Rwy ldg TDZE Arpt Elev 9001 685 690
---------------------------	-------------------------	---

JAL-718 [USAF]

ALPENA COUNTY RGNL (KAPN)

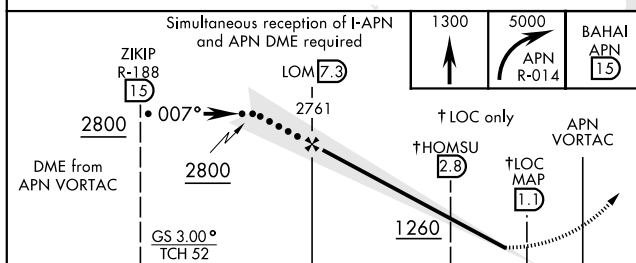
<p>✦ When ALS inop, increase vis to ¾ mile. ✪ When ALS inop, increase vis to 1½ miles.</p>	<p>MALSR A5</p>	<p>MISSED APPROACH: Climb to 1300, then climbing right turn to 5000 on APN VORTAC R-014 to BAHAI/15 DME and hold. Continue climb-in-hold to 5000.</p>
--	---------------------	---

ASOS 120.675	ALPENA APP CON 128.425 379.3	ALPENA TOWER ★ 121.35 (CTAF) 0 318.1	GND CON 121.9 275.8	UNICOM 122.95
------------------------	--	--	-------------------------------	-------------------------



DME REQUIRED

EMERG SAFE ALT 100 NM 4000



CATEGORY	C	D	E
S-ILS 1 *	885-½	200	(200-½)
S-LOC 1 **	1140-7/8	455	(500-7/8)
CIRCLING	1220-1½ 530 (600-1½)	1280-2 590 (600-2)	1320-2¼ 630 (700-2¼)

