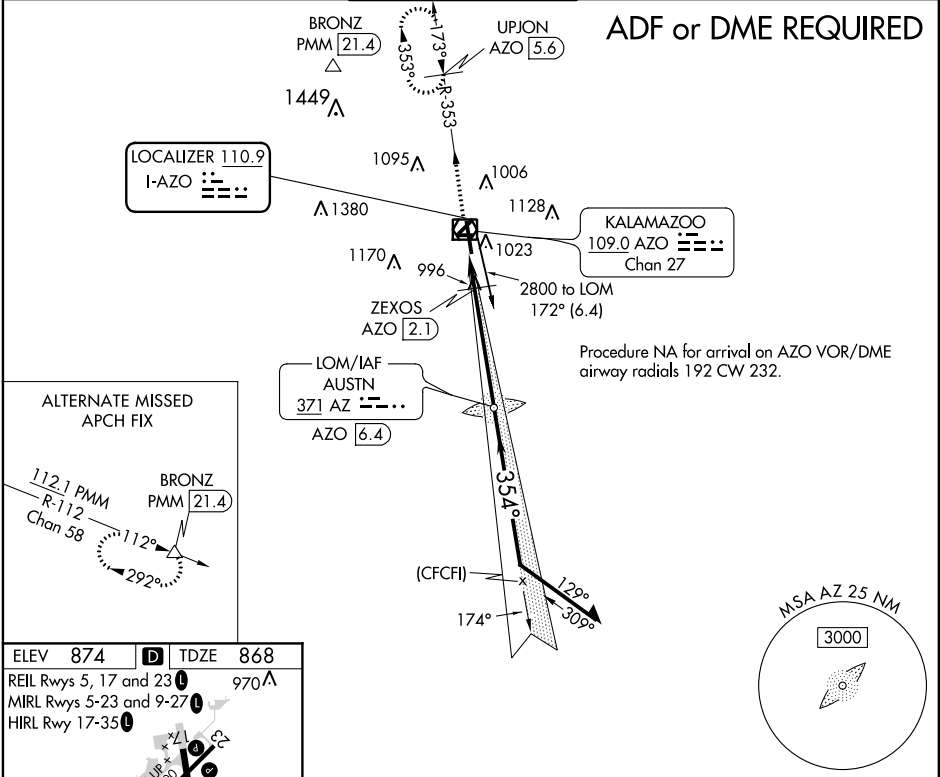


LOC I-AZO <b>110.9</b>	APP CRS <b>354°</b>	Rwy Idg TDZE Apt Elev	<b>6502</b> <b>868</b> <b>874</b>
---------------------------	------------------------	-----------------------------	---

ILS or LOC RWY 35  
KALAMAZOO/BATTLE CREEK INTL (AZO)

<b>T</b> <b>A</b> ASR	Night landing: Rwy 5, 9, 23, 27 NA. DME required. For inop MALSR, increase S-LOC 35 Cats C and D visibility to 1½ mile. ** RVR 1800 authorized with use of FD or AP or HUD to DA.	<b>MALSR</b> 	MISSED APPROACH: Climb to 2600 on AZO VOR/DME R-353 to UPJON/AZO VOR/DME 5.6 DME and hold.
-----------------------------	--	------------------	--

ATIS <b>127.25</b>	GREAT LAKES APP CON ★ <b>121.2 239.25</b>	KALAMAZOO TOWER ★ <b>118.3 (CTAF) 0 257.875</b>	GND CON <b>121.9</b>	CLNC DEL <b>121.75</b>	UNICOM <b>122.95</b>
-----------------------	--	--	-------------------------	---------------------------	-------------------------



ELEV <b>874</b>	<b>D</b>	TDZE <b>868</b>
REIL Rlys 5, 17 and 23	<b>970</b>	
MIRL Rlys 5-23 and 9-27	<b>970</b>	
HIRL Rwy 17-35	<b>970</b>	
947☆		
2800 X 60		
6600 X 150		
27		
354° 5.6 NM from FAF		
FAF to MAP 5.6 NM		
Knots	60	90
Min:Sec	5:36	3:44
	120	150
	2:48	2:14
	180	1:52

2600	AZO R-353	UPJON AZO [5.6]	AUSTIN LOM AZO [6.4]	Remain within 10 NM
* LOC only		ZEXOS AZO [2.1]	2728	174°
			354°	2800
			1340*	2800
			1.3 NM	4.3 NM
CATEGORY	A	B	C	D
S-ILS 35	** 1068/24 200 (200-½)			
S-LOC 35	1260/24	392 (400-½)	1260/35	392 (400-¾)
CIRCLING	1380-1	506 (600-1)	1480-1¾ 606 (700-1¾)	1480-2 606 (700-2)

EC-1, 31 DEC 2020 to 28 JAN 2021

EC-1, 31 DEC 2020 to 28 JAN 2021