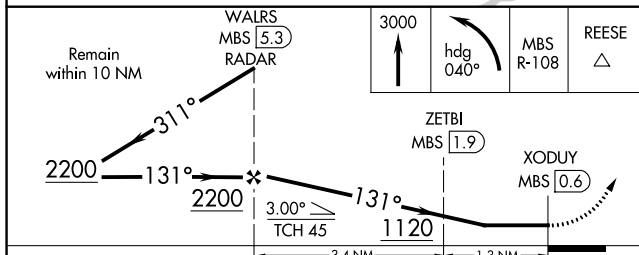
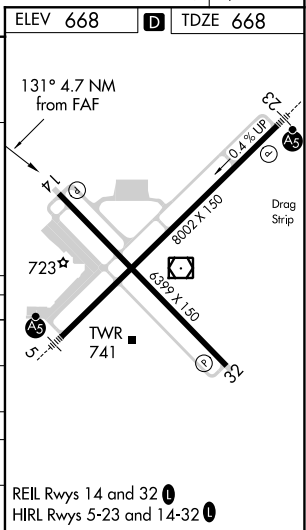


VOR RWY 14  
MBS INTL (MBS)

**MISSED APPROACH:** Climb to 3000 then left turn on heading 040° and MBS R-108 to REESE INT/15.2 DME and hold.



CATEGORY	A	B	C	D
S-14	1120-1 452 (500-1)		1120-1 $\frac{3}{8}$	452 (500-1 $\frac{3}{8}$ )
<b>C</b> CIRCLING	1120-1 452 (500-1)		1240-1 $\frac{1}{2}$ 572 (600-1 $\frac{1}{2}$ )	1240-2 572 (600-2)
ZETBI FIX MINIMUMS (DME REQUIRED)				
S-14	1040-1 372 (400-1)		1040-1 $\frac{3}{8}$	372 (400-1 $\frac{3}{8}$ )
<b>C</b> CIRCLING	1080-1 412 (500-1)	1120-1 452 (500-1)	1240-1 $\frac{1}{2}$ 572 (600-1 $\frac{1}{2}$ )	1240-2 572 (600-2)



EC-1, 31 DEC 2020 to 28 JAN 2021

EC-1, 31 DEC 2020 to 28 JAN 2021