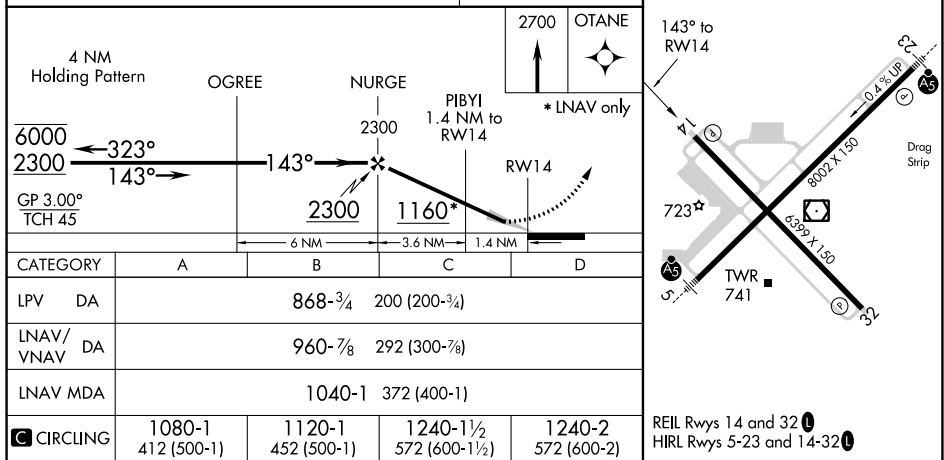
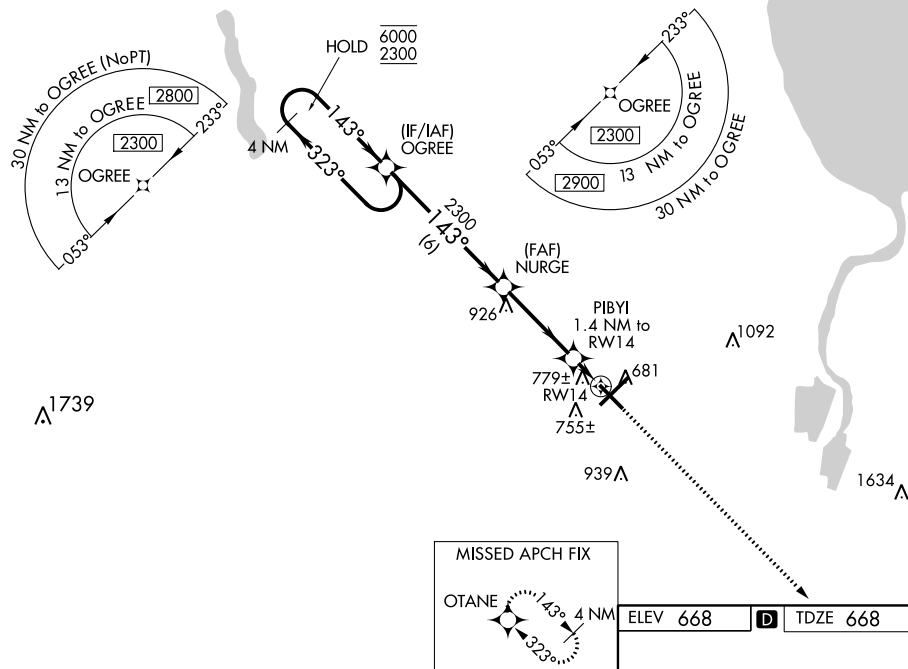


RNAV (GPS) RWY 14
MBS INTL (MBS)

T For uncompensated Baro-VNAV systems, LNAV/VNAV NA below -18°C or above 54°C.

MISSED APPROACH: Climb to 2700 direct OTANE and hold.

UNICOM
122.95

EC-1, 31 DEC 2020 to 28 JAN 2021

EC-1, 31 DEC 2020 to 28 JAN 2021