

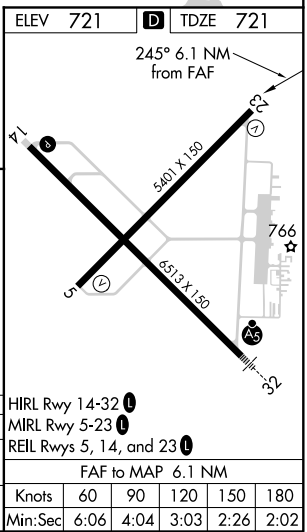
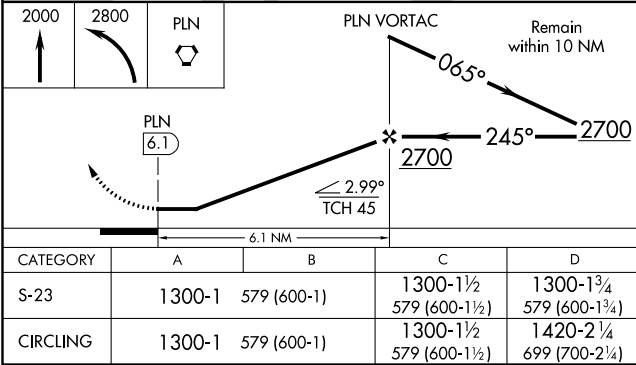
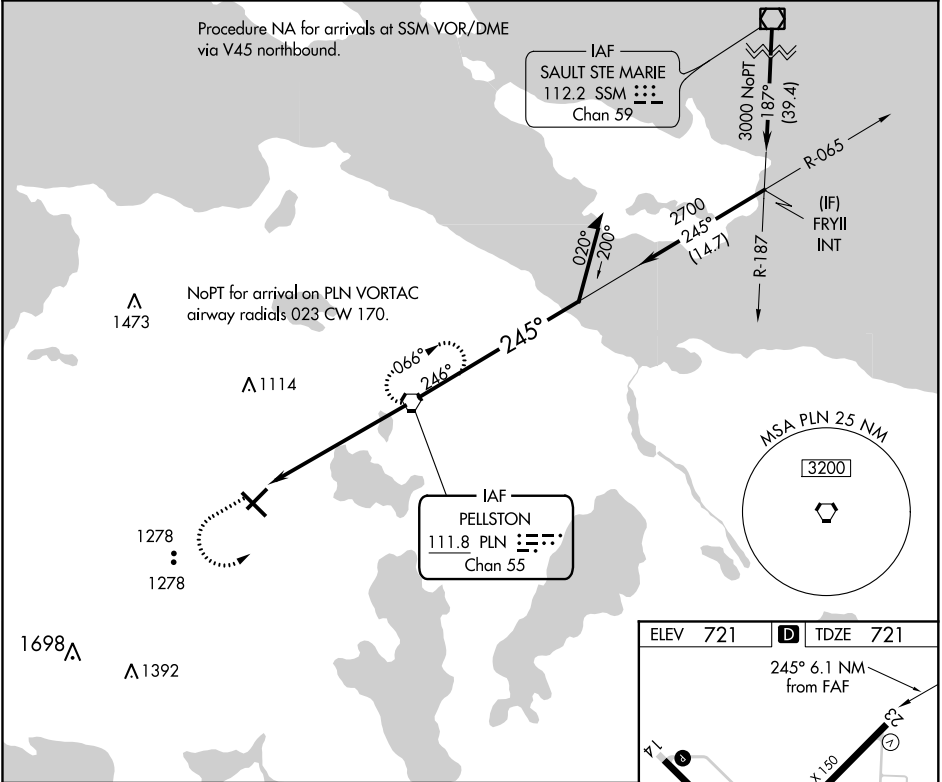
VORTAC PLN	APP CRS	Rwy Idg	5395
111.8	245°	TDZE	721
Chan 55		Apt Elev	721

VOR RWY 23

PELLSTON RGNL AIRPORT OF EMMET COUNTY (PLN)

<p>▼ ▲ ❄ -33°C</p>	<p>When local altimeter setting not received, use Harbor Springs altimeter setting and increase all MDA 40 feet. Increase all Cat C and S-23 Cat D visibility ¼ mile. Rwy 23 helicopter visibility reduction below 1 SM NA. Straight-in Rwy 23 NA at night, Circling Rwy 5, 23 NA at night.</p>	<p>MISSED APPROACH: Climb to 2000 then climbing left turn to 2800 direct PLN VORTAC and hold.</p>
----------------------------	---	---

ASOS 119.025	MINNEAPOLIS CENTER 134.6 354.05	UNICOM 123.0 (CTAF) 0
-----------------	------------------------------------	--------------------------



EC-1, 31 DEC 2020 to 28 JAN 2021

EC-1, 31 DEC 2020 to 28 JAN 2021