

WAAS CH <b>77813</b> <b>W32A</b>	APP CRS <b>321°</b>	Rwy Idg <b>6513</b> TDZE <b>712</b> Apt Elev <b>721</b>
--	------------------------	---

RNAV (GPS) RWY 32

PELLSTON RGNL AIRPORT OF EMMET COUNTY (PLN)

▼

⚠

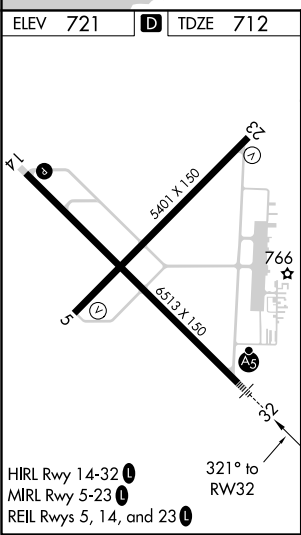
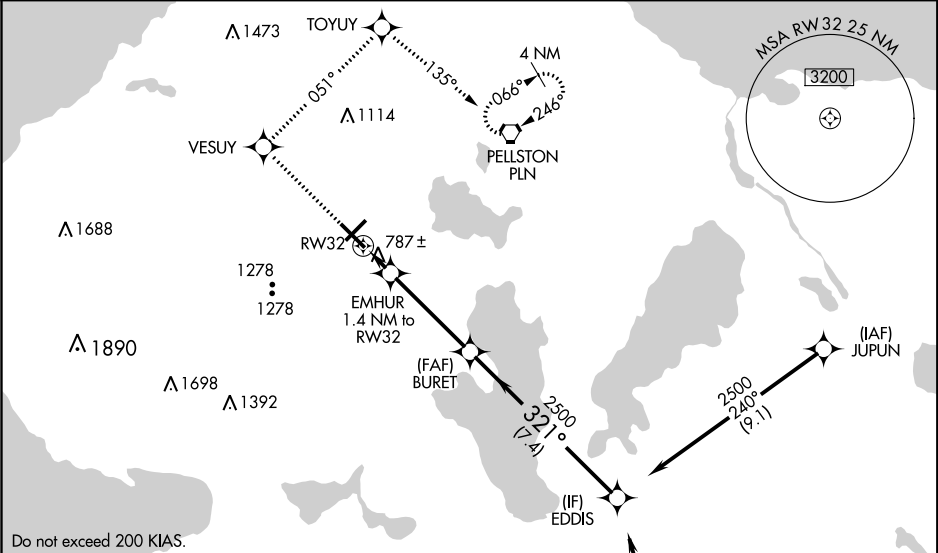
🌡️ -33°C

Baro-VNAV NA when using Harbor Springs altimeter setting. For uncompensated Baro-VNAV systems, LNAV/VNAV NA below -16°C (4°F) or above 47°C (116°F). DME/DME RNP-0.3 NA. When local altimeter setting not received, use Harbor Springs altimeter setting and increase LPV DA to 940, LNAV/VNAV DA to 1084, and all MDA 40 feet; increase Circling Cat C visibility ¼ mile. Night Landing: Rwy 5 NA.

MALSR

MISSED APPROACH: Climb to 2600 direct VESUY and via track 051° to TOYUY and via track 135° to PLN VORTAC and hold.

ASOS <b>119.025</b>	MINNEAPOLIS CENTER <b>134.6 354.05</b>	UNICOM <b>123.0 (CTAF) 0</b>
------------------------	---	---------------------------------



Procedure NA for arrivals at RONDO via V609 southbound.

2600	VESUY	tr 051°	TOYUY	tr 135°	PLN	BURET	EDDIS
*LNAV only.						2500	2500
EMHUR 1.4 NM to RW32						GP 3.00° TCH 54	
RW32						*1220	
1.4 NM						3.9 NM	7.4 NM
CATEGORY	A		B		C		D
LPV DA	912-½		200 (200-½)				
LNAV/VNAV DA	1056-⅝		344 (400-⅝)				
LNAV MDA	1080-½ 368 (400-½)		1080-⅝ 368 (400-⅝)				
CIRCLING	1260-1 539 (600-1)		1300-1 579 (600-1)		1300-1½ 579 (600-1½)		1420-2 ¼ 699 (700-2¼)