

LOC I-PLN
111.3

APP CRS
321°

Rwy Idg **6513**
TDZE **712**
Apt Elev **721**

PELLSTON RGNL AIRPORT OF EMMET COUNTY (PLN)

ILS or LOC RWY 32

When local altimeter setting not received, use Harbor Springs
altimeter setting and increase DA to 940, and all MDA 40 feet;
increase S-LOC 32 Cat D, Circling Cat C and EMHUR fix minimums
S-LOC 32 Cat C, Circling Cat C visibility ¼ mile. Circling Rwy 5
NA at night.

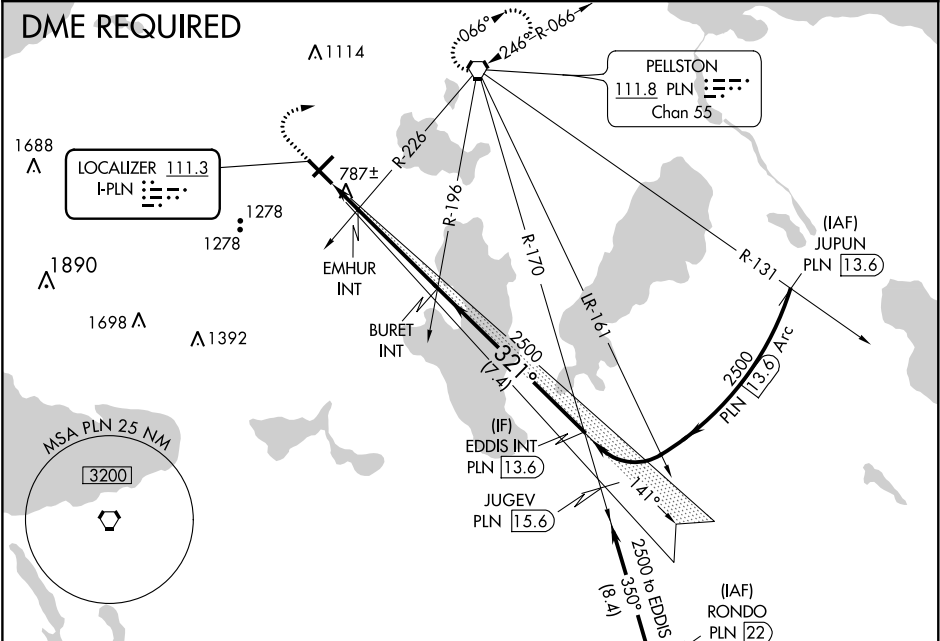
MALSR

MISSED APPROACH: Climb
to 1400 then climbing right
turn to 2600 direct PLN
VORTAC and hold.

ASOS
119.025

MINNEAPOLIS CENTER
134.6 354.05

UNICOM
123.0 (CTAF) 0



ELEV 721 TDZE 712

HIRL Rwy 14-32
MIRL Rwy 5-23
REIL Rwy 5, 14, and 23

321° 5.4 NM from FAF

FAF to MAP 5.4 NM

Knots	60	90	120	150	180
Min:Sec	5:24	3:36	2:42	2:10	1:48

CATEGORY	A	B	C	D
S-ILS 32	912-½ 200 (200-½)			
S-LOC 32	1220-½ 508 (500-½)	1220-1 508 (500-1)		
CIRCLING	1260-1 539 (600-1)	1300-1 579 (600-1)	1300-1½ 579 (600-1½)	1420-2¼ 699 (700-2¼)
EMHUR FIX MINIMUMS (DUAL VOR RECEIVERS REQUIRED)				
S-LOC 32	1080-½ 368 (400-½)			1080-¾ 368 (400-¾)
CIRCLING	1260-1 539 (600-1)	1300-1 579 (600-1)	1300-1½ 579 (600-1½)	1420-2¼ 699 (700-2¼)