
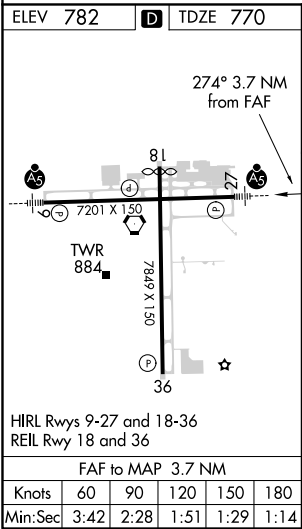
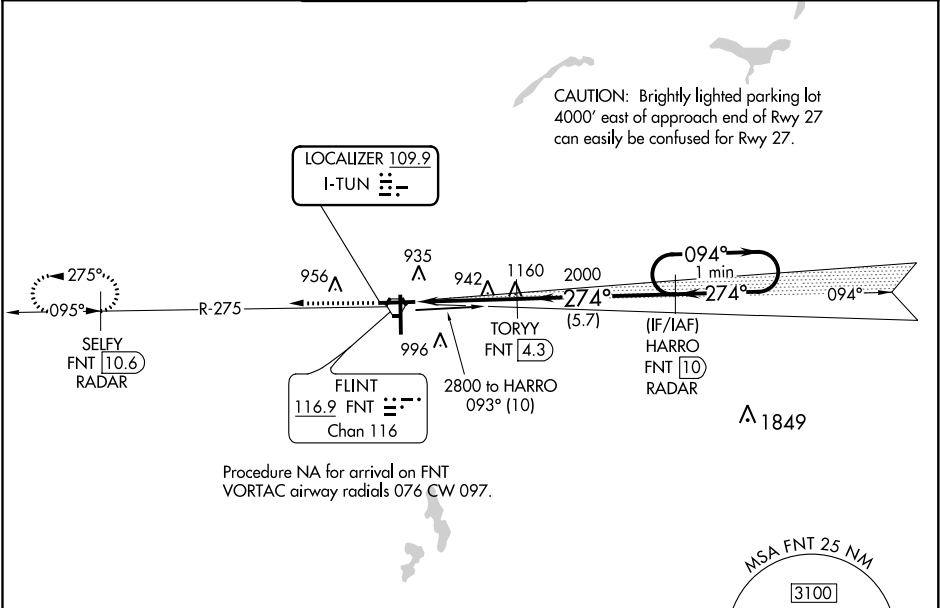


LOC I-TUN 109.9	APP CRS 274°	Rwy Idg TDZE Apt Elev 7201 770 782
---------------------------	------------------------	--

ILS or LOC RWY 27
BISHOP INTL (FNT)

DME or RADAR required for procedure entry. DME or RADAR required.		<div>MALSR</div> <div></div>	MISSED APPROACH: Climb to 2600 on FNT VORTAC R-275 direct SELFY/FNT VORTAC 10.6 DME/RADAR and hold.
<div><div><div><div><div></div><div></div></div><div><div></div><div></div></div></div><div><div></div><div></div></div><div><div></div><div></div></div></div><div>ASR</div></div> <td>DME from FNT VORTAC. Simultaneous reception of I-TUN and FNT DME required. For inop ALS, increase S-LOC 27 Cat A/B visibility to 1 SM, and Cat C/D visibility to 1½ SM.</td>	DME from FNT VORTAC. Simultaneous reception of I-TUN and FNT DME required. For inop ALS, increase S-LOC 27 Cat A/B visibility to 1 SM, and Cat C/D visibility to 1½ SM.		

ATIS 133.15	GREAT LAKES APP CON ★ 118.8 257.9	FLINT TOWER ★ 126.3 (CTAF) 257.9	GND CON 121.9	CLNC DEL 121.75	UNICOM 122.95
-----------------------	---	--	-------------------------	---------------------------	-------------------------



<div>2600</div> <div>↑</div>	FNT R-275	SELY FNT 10.6 RADAR	<div>TORYY FNT 4.3</div>				<div>HARRO FNT 10 RADAR</div>	One Minute Holding Pattern
			*LOC only.					
			<div><div>FNT 0.6</div><div>*FNT 2</div><div>2000</div><div>2000</div></div>					
			<div>1.4 NM2.3 NM5.7 NM</div>					
			27.4°		094°→			2800
					← 274°			
					GS 3.00°			
					TCH 56			
CATEGORY	A		B		C		D	
S-ILS 27			970-½		200 (200-½)			
S-LOC 27	1260-½		490 (500-½)		1260-1		490 (500-1)	
<div>C</div> CIRCLING	1260-1 478 (500-1)		1300-1 518 (600-1)		1300-1½ 518 (600-½)		1520-2¼ 738 (800-2¼)	