

WAAS CH 53733 W36A	APP CRS 005°	Rwy Idg TDZE Apt Elev	5108 624 624
--	------------------------	-----------------------------	---

RNAV (GPS) RWY 36

CHERRY CAPITAL (TVC)

▽

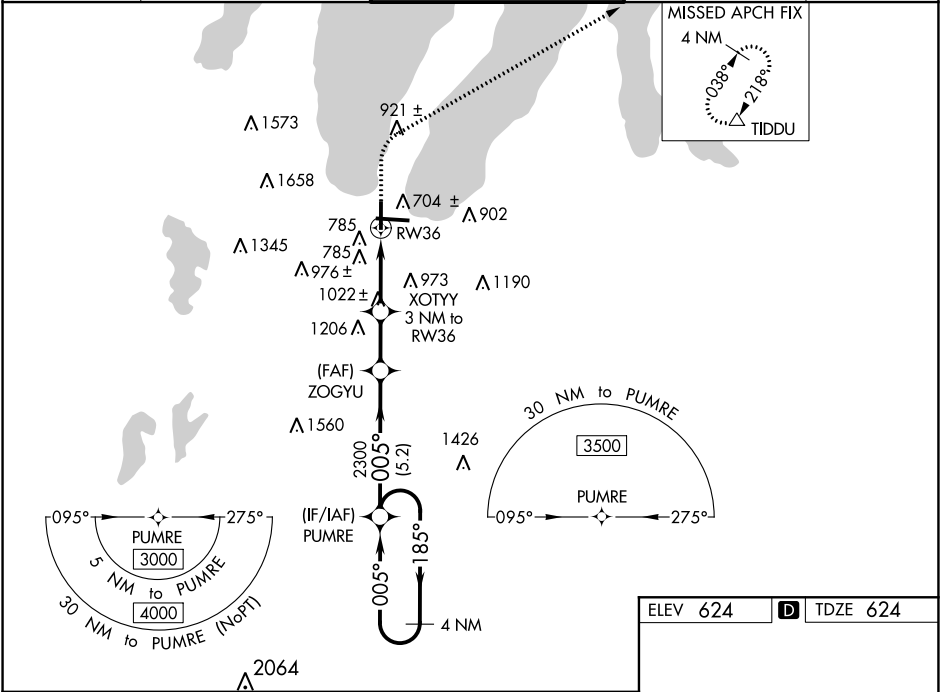
⚠

❄ -20°C

Baro-VNAV NA when using Antrim County altimeter setting. For uncompensated Baro-VNAV systems, LNAV/VNAV NA below -16°C (4°F) or above 54°C (130°F). DME/DME RNP-0.3 NA. When local altimeter setting not received use Antrim County altimeter setting; increase all DA 51 feet and all MDA 60 feet, increase LNAV/VNAV all Cats and Circling Cat C visibilities ¼ mile, and increase LPV all Cats, LNAV Cat C/D and Circling Cat D visibilities ½ mile. Helicopter visibility reduction below ¾ SM NA. Night landing Rwy 18 NA.

MISSED APPROACH:
Climb to 1400 then climbing right turn to 3000 direct TIDDU and hold.

ATIS 119.175	MINNEAPOLIS CENTER 132.9 338.3	TRAVERSE CITY TOWER ★ 124.2(CTAF) 0 348.6	GND CON 121.8 348.6	UNICOM 122.95
------------------------	--	---	-------------------------------	-------------------------



4 NM VGSI and RNAV glidepath not coincident (VGSI Angle 3.50/TCH 53). Holding Pattern		1400	3000	TIDDU
3000 ← 185° → 005° → 005° → 2300		ZOGYU	XOTYY 3 NM to RW36	* LNAV only.
GP 3.00° TCH 48		2300	* 1620	RW36
5.2 NM		2.1 NM	3 NM	
CATEGORY	A	B	C	D
LPV DA	899-7⁄8		275 (300-7⁄8)	
LNAV/VNAV DA	1146-1¾		522 (600-1¾)	
LNAV MDA	1280-1	656 (700-1)	1280-17⁄8	656 (700-17⁄8)
Ⓢ CIRCLING	1280-1	656 (700-1)	1500-2½ 876 (900-2½)	1720-3 1096 (1100-3)

