



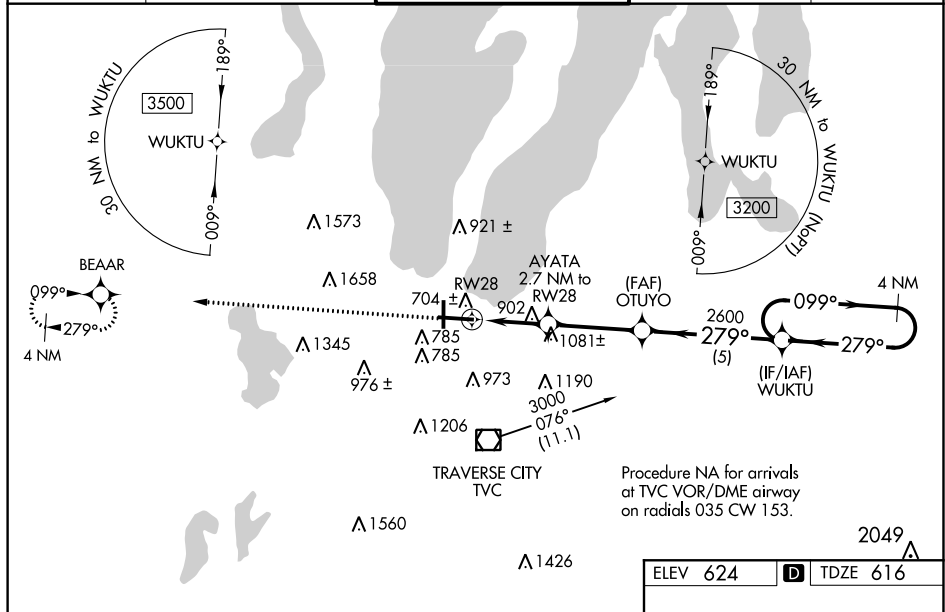


WAAS CH <b>97535</b> <b>W28A</b>	APP CRS <b>279°</b>	Rwy Idg TDZE Apt Elev	<b>7016</b> <b>616</b> <b>624</b>
--	------------------------	-----------------------------	---

RNAV (GPS) RWY 28  
CHERRY CAPITAL (TVC)

   -20°C	DME/DME RNP-0.3 NA. For uncompensated Baro-VNAV systems, LNAV/VNAV NA below -19°C (2°F) or above 54°C (130°F). Baro-VNAV and VDP NA with Bellaire altimeter setting. When local altimeter setting not received, Bellaire altimeter setting: increase DA 51 feet and all MDA 60 feet. Increase LPV all Cats visibility 1/8 mile. LNAV/VNAV visibility all Cats 1/4 mile and LNAV Cat B visibility 1/4 mile and C/D visibilities 1/8 mile and Circling Cat B/C visibility 1/4 mile. Night Landing: Rwy 18 NA. For inop MALSR, increase all LPV all Cats visibility to 1/4, LNAV Cats C/D visibility to 2 miles. For inop MALSR when using Bellaire altimeter setting, increase LPV all Cats visibility to 1/2 mile, LNAV Cats C/D visibility to 2 1/2 miles. #Missed approach requires minimum climb of 237 feet per NM to 2000.	MALSR  MISSED APPROACH: Climb to 3000 direct BEAAR and hold.
--	--	---

ATIS 119.175	MINNEAPOLIS CENTER 132.9 338.3	TRAVERSE CITY TOWER ★ 124.2(CTAF) 0 348.6	GND CON 121.8 348.6	UNICOM 122.95
-----------------	-----------------------------------	--	------------------------	------------------



3000 BEAAR

VGS and RNAV glidepath not coincident  
(VGS Angle 3.00/TCH 45).

\*RNAV only.

WUKTU 4 NM Holding Pattern

3000

099°

279°

2600

2600

AYATA 2.7 NM to RW28

\*2.2 NM to RW28

\*1520

RW28

GP 3.00° TCH 52

2.2 NM 0.5 NM 3.4 NM 5 NM

CATEGORY	A	B	C	D
LPV DA	# 816- $\frac{1}{2}$	200 (200- $\frac{1}{2}$ )		
LPV DA	963- $\frac{7}{8}$	347 (400- $\frac{7}{8}$ )		
RNAV/VNAV DA	1330-2	714 (800-2)		
RNAV MDA	1340- $\frac{1}{2}$ 724 (800- $\frac{1}{2}$ )	1340-1 $\frac{5}{8}$ 724 (800-1 $\frac{5}{8}$ )		
<b>C</b> CIRCLING	1340-1 716 (800-1)	1500-2 $\frac{1}{2}$ 876 (900-2 $\frac{1}{2}$ )	1720-3 1096 (1100-3)	

