

LOC I-TVC <u>110.7</u>	APP CRS 279°	Rwy Idg TDZE Apt Elev	7016 616 624
----------------------------------	------------------------	-----------------------------	---

ILS or LOC RWY 28
CHERRY CAPITAL (TVC)

**T
A
❄️-2**

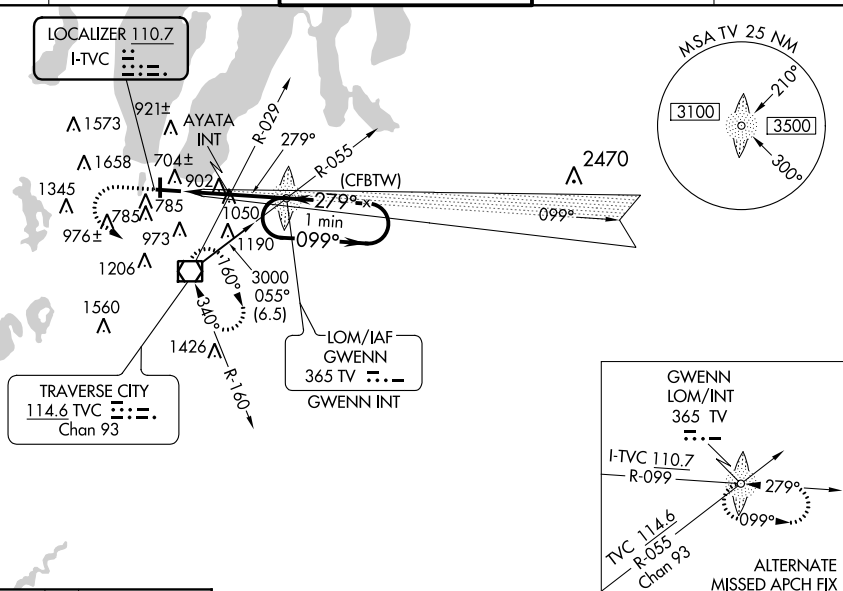
AYATA fix minimums: For inop MALSR, increase S-LOC 28 Cat C, D visibility to 2 miles. AYATA fix minimums: For inop MALSR when using Bellaire altimeter setting, increase S-LOC 28 Cat C, D visibility to 2½ miles. Circling to Rwy 18 NA at night. When local altimeter setting not received, use Bellaire altimeter setting and increase all DA 51 feet and all MDA 60 feet, increase S-LOC 28 Cat A and Circling Cat C visibility ¼ mile; increase AYATA fix minimums S-LOC 28 Cats C, D visibility ½ mile and Circling Cat C visibility ½ mile.

MALSR

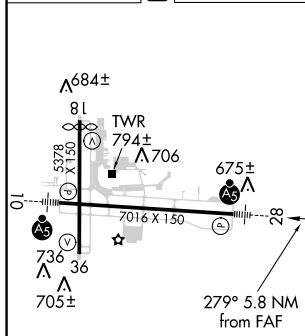


MISSED APPROACH:
Climb to 1100 then
climbing left turn to
3000 direct TVC
VOR/DME and hold,
continue climb-in-hold
to 3000.

ATIS 119.175	MINNEAPOLIS CENTER 132.9 338.3	TRAVERSE CITY TOWER ★ 124.2 (CTAF) 0 348.6	GND CON 121.8 348.6	UNICOM 122.95
-----------------	-----------------------------------	---	------------------------	------------------



ELEV 624	D	TDZE 616
----------	----------	----------






HIRL Rwy 10-28 **L**
MIRL Rwy 18-36 **L**

FAF to MAP 5.8 NM

Knots	60	90	120	150	180
Min:Sec	5:48	3:52	2:54	2:19	1:56

TRAVERSE CITY, MICHIGAN

Amdt 14B 05MAR15

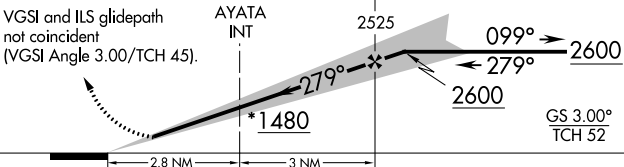
1100	3000	TVC
		

VGSI and ILS glidepath
not coincident
(VGSI Angle 3.00/TCH 45).

* LOC only.

GWENN
LOM/INT

One Minute Holding Pattern



CATEGORY	A	B	C	D
S-ILS 28	816-½ 200 (200-½)			
S-LOC 28	1480-¾ 864 (900-¾)	1480-2 864 (900-2)		
C CIRCLING	1480-1¼ 856 (900-1¼)	1500-2½ 876 (900-2½)		1720-3 1096 (1100-3)
AYATA FIX MINIMUMS				
S-LOC 28	1360-½ 744 (800-½)	1360-¾ 744 (800-¾)	1360-1¾ 744 (800-1¾)	
C CIRCLING	1360-1 736 (800-1)	1360-1¼ 736 (800-1¼)	1500-2½ 876 (900-2½)	1720-3 1096 (1100-3)

44°44'N-85°35'W

CHERRY CAPITAL (TVC)

ILS or LOC RWY 28