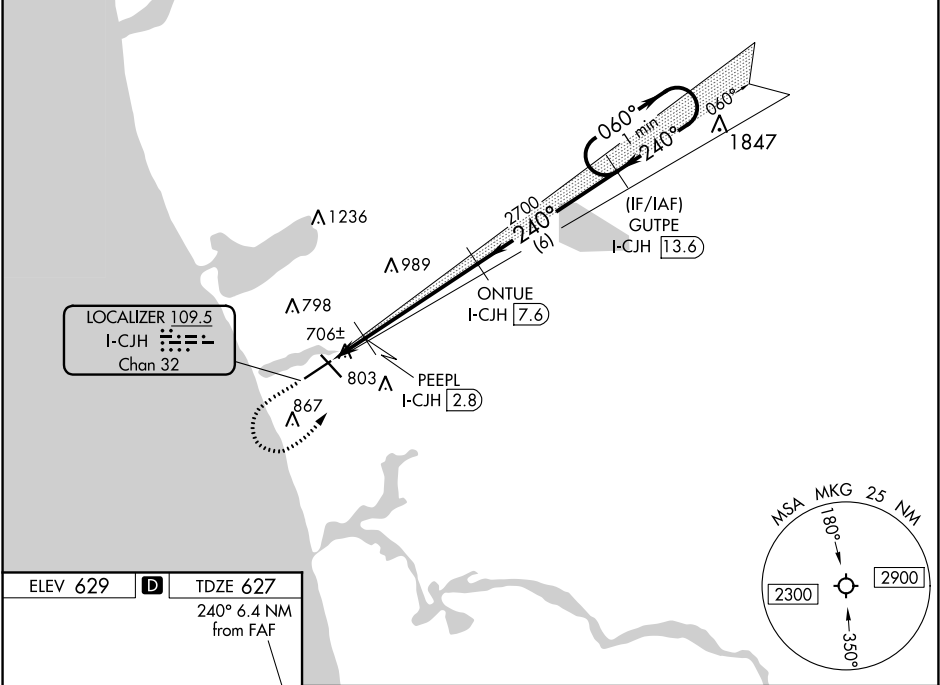


LOC/DME I-CJH 109.5 Chan 32	APP CRS 240°	Rwy Idg TDZE Apt Elev	6501 627 629
---	------------------------	-----------------------------	---

ILS or LOC RWY 24
MUSKEGON COUNTY (MKG)

▼ ▲ DME required. RADAR required. RNAV 1-GPS required.		MALSR 	MISSED APPROACH: Climb to 2500 then climbing left turn to 3000 direct GUTPE and hold.	
ATIS 124.3	GREAT LAKES APP CON ★ 119.8 290.35 (North) 133.825 290.35 (South)	MUSKEGON TOWER ★ 126.25 (CTAF) 343.725	GND CON 121.6	UNICOM 122.95

RADAR REQUIRED



ELEV 629 D TDZE 627 240° 6.4 NM from FAF		2500 3000 GUTPE *LOC only I-CJH [13.6]		One Minute Holding Pattern	
		PEEPL I-CJH [2.8] 2700 GUTPE I-CJH [13.6]		060° → 3000 ← 240°	
REIL Rwy 6 1 REIL Rwy 14 HIRL Rws 6-24 1 HIRL Rws 14-32		*I-CJH [2.1] 2700 *1160		GS 3.00° TCH 56	
FAF to MAP 6.3 NM		CATEGORY A B C D			
Knots 60 90 120 150 180		S-ILS 24		827-½ 200 (200-½)	
Min:Sec 6:18 4:12 3:09 2:31 2:06		S-LOC 24		960-½ 333 (400-½)	
CIRCLING		1080-1 1180-1 1200-1½ 1200-2		451 (500-1) 551 (600-1) 571 (600-1½) 571 (600-2)	